


1 Installation and Startup Guide

This document covers the installation of cMT3092X Series HMI, for the detailed specifications and operation, please refer to Datasheet, Brochure and EasyBuilder Pro User Manual. Please read all warnings, precautions, and instructions on the device carefully before use.

Install Environment:

| | |
|---|---|
| NEMA Rating | The HMI product is UL Type 4X rated (NEMA 4), indoor use only. |
| Electrical Environment | The HMI product has been tested to conform to European CE requirements. This means that the circuitry is designed to resist the effects of electrical noise. This does not guarantee noise immunity in severe cases. Proper wire routing and grounding will insure proper operation. |
| Environmental Considerations | <ol style="list-style-type: none"> (1) Make sure that the displays are installed correctly and that the operating limits are followed. Avoid installing units in environments where severe mechanical vibration or shocks are present. (2) Do not operate the unit in areas subject to explosion hazards due to flammable gases, vapors or dusts. (3) Do not install the unit where acid gas, such as SO₂ exists. (4) This device should be mounted in the vertical position and for use on the flat surface enclosure. (5) Conform to UL 61010-1 safety requirement for use in Pollution Degree 2 Environment and dry location. (6) Relative Humidity: 10% ~ 90% (non-condensing) |
| Cleaning Considerations | Clean the device using dry cloths. Do not use liquid or spray detergents for cleaning. |
| IP Rating | IP 66 |
|  Warning | Protection impairment if used in a manner not specified by the manufacturer. Déficit de protection si utilisé d'une manière non spécifiée par le fabricant. |

2 Unpacking the Unit

Unpack and check the delivery. If damage is found, please contact the supplier.

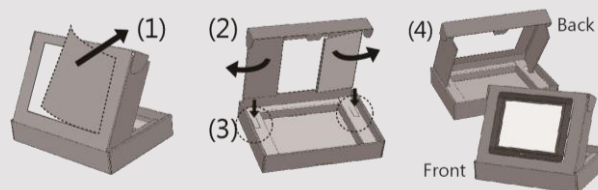
NOTE: Place the operator panel on a stable surface during installation. Dropping it or letting it fall may cause damage.

The package includes:

- (1) Installation Instruction, 2-sided A4 *1
- (2) Human Machine Interface *1
- (3) Power Connector *1
- (4) Brackets & Screws *1 pack
- (5) USB Stick Clamp & Tying Strap *1

The packing box can be transformed into an HMI stand. Please follow the steps to make the stand.

1. Remove the center of the box cover along the perforated line.
2. Pull the two inner flaps.
3. Press down along the perforated line inside the box.
4. Complete the stand as shown.



3 Installation Instructions

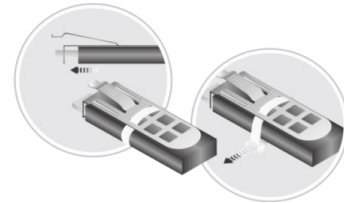
Use a control box that provides enough space for the HMI. Dimension: 250 mm x 192 mm. Secure the HMI in the control box position, using all the fastening holes, brackets and screws. Screw Torque: 2.5 N·m (reaching waterproof effect and preventing deformation.)

Plan for adequate space around the unit in the control box enclosure, for ventilation and cables. Consider the space for other devices inside the enclosure. The ambient temperature around the unit must be 0 ~ 50°C. Minimum required clearances (along the top and bottom): 10 mm. Maximum panel thickness: 4.5 mm

USB Stick Clamp Usage


Combining the USB Stick with the clamp can protect the HMI with HMI when strong vibration is present.

1. Insert the USB connector to the clamp.
2. Press the spring and insert the USB stick.



4 Power Connections

Power Connector Specifications:

-  Wire AWG: 24~12
- Wiring Conductor Minimum Temperature: 0°C
- Screw Torque: 4.5 lbf-in (max.)
- Copper conduct only.

NOTE:

1. Connect positive DC line to the '+' terminal.
2. When downloading project using EasyBuilder Pro with PLC and PC simultaneously, for safety, please do not result in damage to HMI or PC.

5 System Settings

When the HMI powers up and displays the start screen, tap "Settings" to open the Setting page. To configure the system, tap "configure", and a login window will appear. Enter the system password (default: 111111). If the password is correct, and log in to make changes. In the Settings page, set HMI Time/Date/Name, and

6 EasyBuilder Pro Software Settings

Launch EasyBuilder Pro software, select your project file, press F7 shortcut key to open the download dialog box: Select Ethernet > IP tab > Enter your HMI IP > Click Download to download this project file to HMI.

Using screensaver and backlight saver is recommended in order to avoid image persistence caused by displaying the same image on HMI for a long time.

(Please refer to EasyBuilder Pro User Manual for software operation details.)

7 Communication Connections

NOTE:

1. Only Tx & Rx (no RTS/CTS) may be used for COM1 RS232 when COM3 RS-232 is also used.
2. COM2 / COM3 RS-485 2W Supports MPI 187.5K, please use one at a time.

1 2 3 4 5
6 7 8 9 Con.B

COM1/COM3 [RS232] 9 Pin, Male, D-sub

| PIN# | COM1 [RS232]4W | COM3 [RS232]2W |
|------|-------------------|-------------------|
| 1 | | |
| 2 | RxD | |
| 3 | TxD | |
| 4 | | |
| 5 | GND | |
| 6 | | |
| 7 | RTS | TxD |
| 8 | CTS | RxD |
| 9 | | |

5 4 3 2 1
9 8 7 6 Con.A

COM2/COM3 [RS485] 9 Pin, Female, D-sub

| PIN# | COM2 [RS485]2W | COM2 [RS485]4W | COM3 [RS485]2W |
|------|-------------------|-------------------|-------------------|
| 1 | Data- | Rx- | |
| 2 | Data+ | Rx+ | |
| 3 | | Tx- | |
| 4 | | Tx+ | |
| 5 | GND | | |
| 6 | | | Data- |
| 7 | | | |
| 8 | | | |
| 9 | | | Data+ |

8 Restore Factory Default

There are two methods to restore factory default, both of which will erase all project files and data stored on the device.

1. Follow the instructions in section 5 of this manual to open the Setting page and select the appropriate page based on the OS version before pressing "Reset HMI to default":
For OS versions 20231201 or later, select the "System Properties" page, press "Reset HMI to Default," and select "Reset".
For OS versions before 20231201, select the "Reset Options" page, press "Reset HMI to default", and enter "yes".
2. Alternatively, during login, enter "default111111".
For OS versions 20231201 or later, select "Reset".
For OS versions before 20231201, enter "yes".

9 Battery Replacement

Battery replacement shall be performed by qualified personnel only and care must be taken when handling lithium batteries. For more information on battery replacement and disposal considerations, please refer to the following link:


http://www.weintek.com/download/MT8000/eng/FAQ/FAQ_103_Replace_Battery_en.pdf

CAUTION

 Power

NOTE: Make installing the

Use power output powered by DC systems. The power supply. The peak

 Fusing Requirements


If the display does will protect against of time. Check with

 High Voltage

A resettable fuse DC voltage source

 Emergency Stop

A Hard-wired EM ICS Safety Recor


 Supply Voltage Condition

Do not power the power supply. Not power the unit.


 Wire Routing

- a. Power wire le
- b. Please use tw impedance m
- c. If wiring is to devices.
- d. Keep AC, high
- e. Add a resistor supply and the dissipation. T

DANGER

 Hardware Considerations

The system des thereby create a interface can lea physical injury to If you use any p potential safety h steps depend on installation of sol installation of Cor

 Programming Considerations

To conform to IC ensure that all w checks built into t personnel.

Limited Warranty

This product is limited warranted ag The proven defective product will e This warranty shall not cover any p
(a) Out of warranty period which is 12 month
(b) Damage caused by Force Majeure, acci
(c) Product has been repaired or taken apart
(d) Products whose identification markings h