

# SAIA S \_BUS(Ethernet)

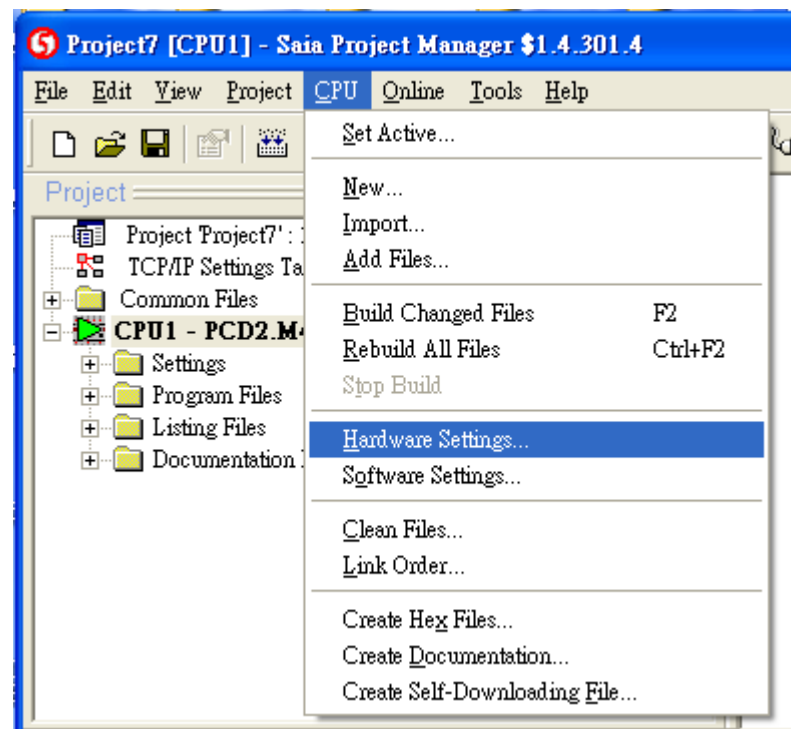
SAIA PCD series Ethernet-TCP/IP

<http://www.saia-burgess.com/>

## HMI Setting:

Parameters	recommend	Option	Notes
PLC type	SAIA SBUS (Ethernet)		
Com port	Ethernet		
Port no.	5050		
PLC Station No.	0		

## PLC Setting



**Hardware Settings [CPU1]**

PCD | Memory | Password | S-Bus | Serial | Modem | Profi-S-Bus | TCP/IP | Gateway

☒ TCP/IP : Slot B2, Channel 8

IP Node: 1 S.PRJ.CPU1.IPNode

IP Address: 192 . 168 . 1 . 107 PGU Port: ☒

Subnet Mask: 255 . 255 . 255 . 0 Slave: ☒

Default Router: 192 . 168 . 1 . 254 Network Groups...

☒ TCP/IP : Slot B1, Channel 9

IP Node: 2 S.PRJ.CPU1.IPNode2

IP Address: 192 . 168 . 1 . 108 PGU Port: ☒

Subnet Mask: 255 . 255 . 255 . 0 Slave: ☒

Default Router: 192 . 168 . 1 . 254 Network Groups...

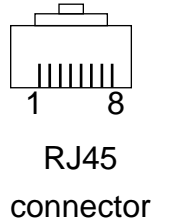
## Device address:

Bit/Word	Device type	Format	Range	Memo
B	Flag	DDDD	0~8191	
B	Output	DDDD	0~1023	
B	Input	DDDD	0~1023	Read Only
B	Reg_Bit	DDDDdd	0~1638331	dd : Bit no. (00~31)
DW	Register	DDDDD	0~16383	
DW	Counter	DDDD	0~1599	
DW	Timer	DDDD	0~1599	
DW	Reg_Float	DDDD	0~16383	

## Wiring diagram:

Ethernet:

MT8000 Ethernet RJ45			Wire color	Ethernet Hub or Switch RJ45		
1	TX+		White/Orange		1	RX+
2	TX-		Orange		2	RX-
3	RX+		White/Green		3	TX+
4	BD4+		Blue		4	BD4+
5	BD4-		White/Blue		5	BD4-
6	RX-		Green		6	TX-
7	BD3+		White/Brown		7	BD3+
8	BD3-		Brown		8	BD3-



Ethernet: Direct connect (crossover cable)

MT8000 Ethernet RJ45			Wire color	SAIA SBUS Ethernet RJ45		
1	TX+		White/Orange		3	RX+
2	TX-		Orange		6	RX-
3	RX+		White/Green		1	TX+
4	BD4+		Blue		4	BD4+
5	BD4-		White/Blue		5	BD4-
6	RX-		Green		2	TX-
7	BD3+		White/Brown		7	BD3+
8	BD3-		Brown		8	BD3-

## Driver Version:

Version	Date	Description of Changes
V1.00	Aug/17/2010	
V1.10	Dec/3/2010	Add Reg_Bit register