

WEINTEK LABS., INC.

Operation Log

Demo Project

Tina Lee
2012/12/22

Contents

1. Overview and Operation.....	1
2. Setting up the Screen.....	3

1. Overview and Operation

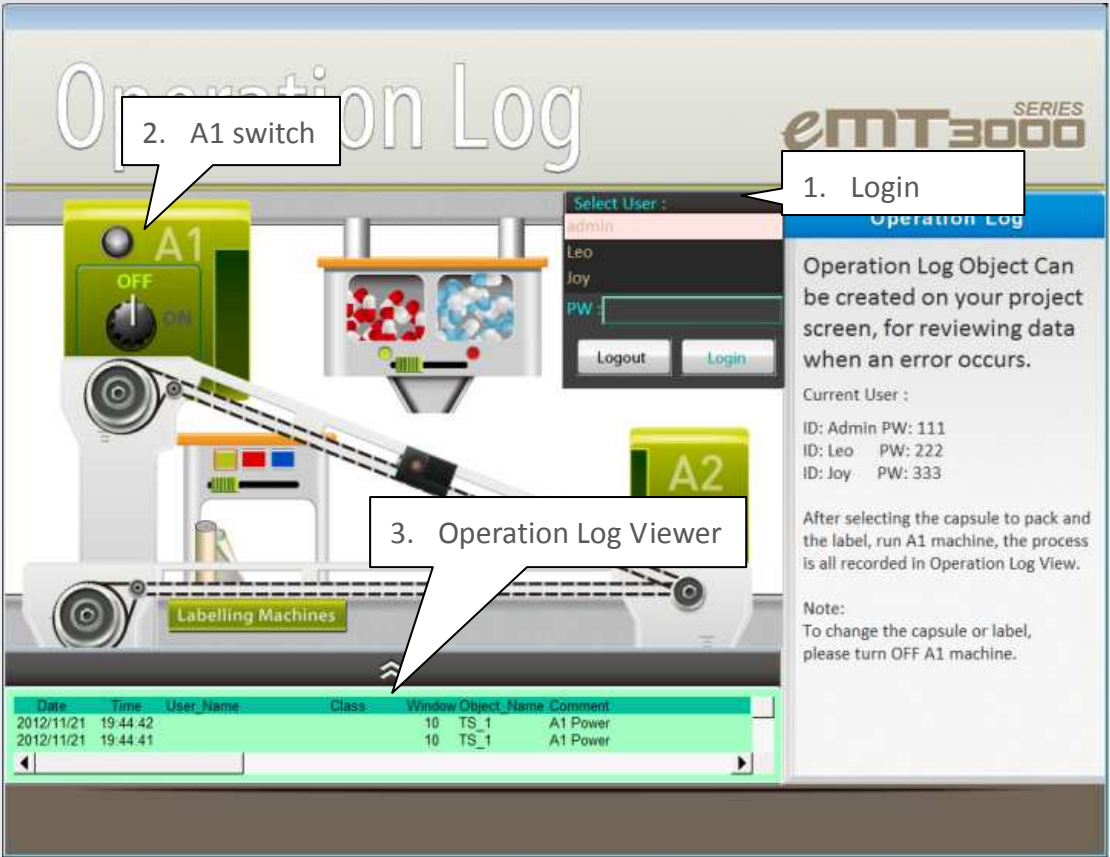
Overview

Operation Log records user operation steps and display them in real-time. When an error occurs, the records can be analyzed. The backup tables can be used to review the process in order to resolve the errors.



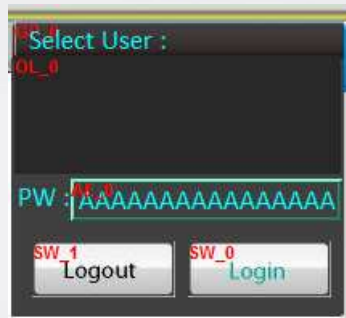
Operation

After login, select the capsule and the label to be placed on the bottle. Turn ON A1 machine to start packing the capsules. To change the capsule or label, please turn OFF A1 machine. The operation log records all the actions performed by different users from login to logout. Operation Log Viewer at the bottom can be used to observe the production line by reviewing who was operating, the time and the steps.



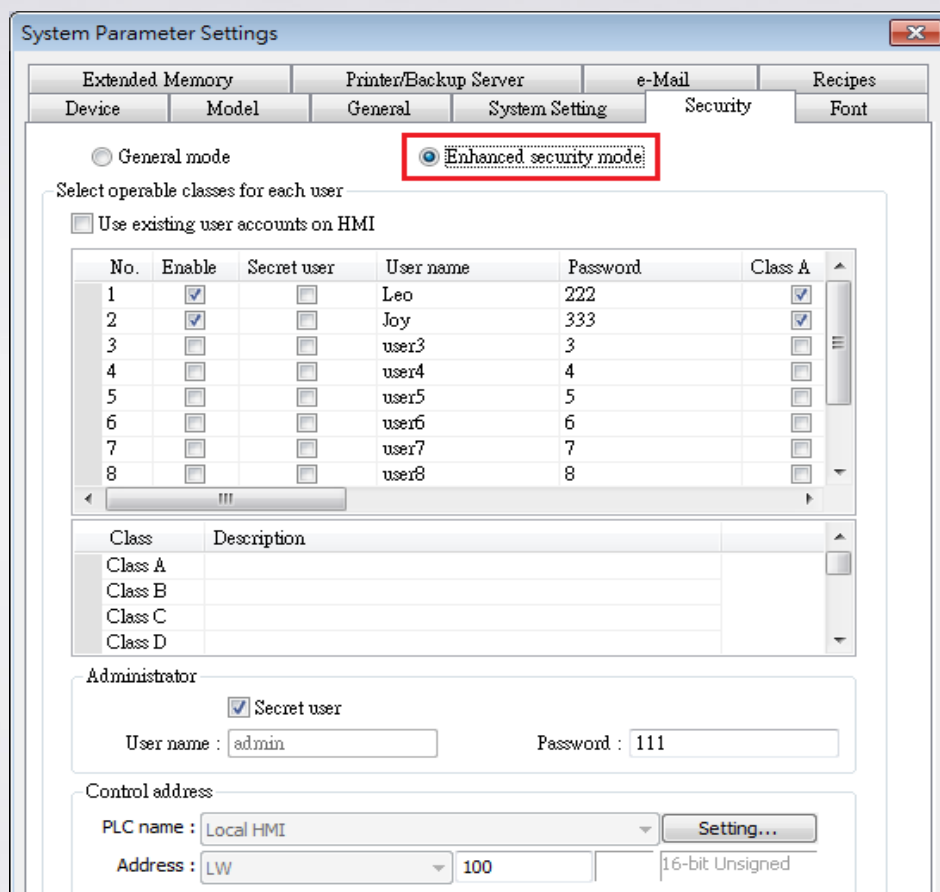
2. Setting up the Screen

Step 1. Create the objects for login.

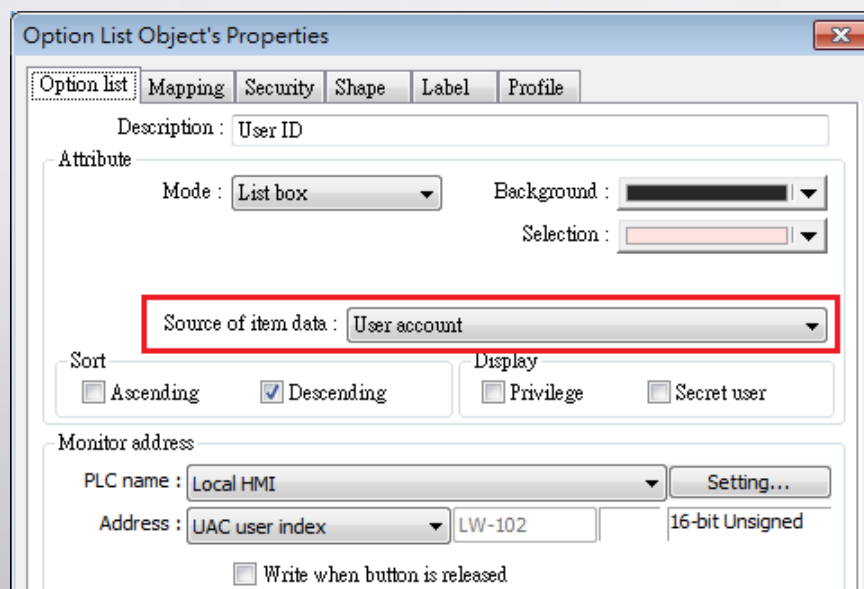


In [System Parameter Settings] > [Security], select [Enhanced security mode], and then set user name and password. The following is an example.

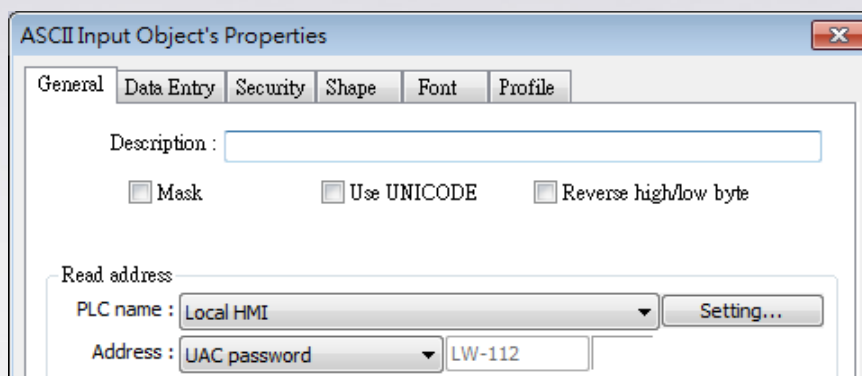
User name	Password
admin (the administrator)	111
Leo	222
Joy	333



Create an Option List object, in [Source of item data] select [User account].



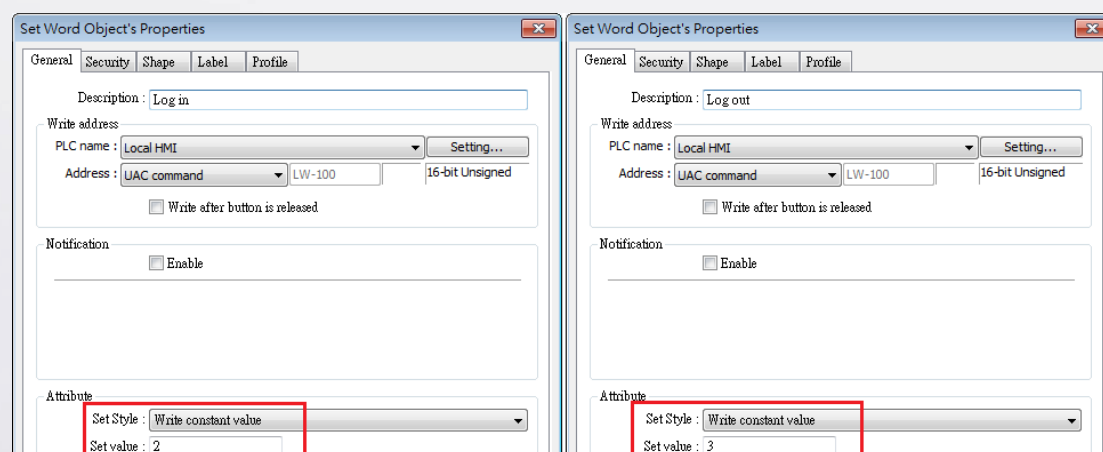
Create an ASCII Input object to enter user password.



Create two Set Word objects to log in and log out.

Log in: Under [Attribute] select [Write constant value] and enter 2.

Log out: Under [Attribute] select [Write constant value] and enter 3.



Step 2. Create the objects of the machine.



Create a Toggle Switch object, set address to LB-0 to switch ON / OFF the machine.

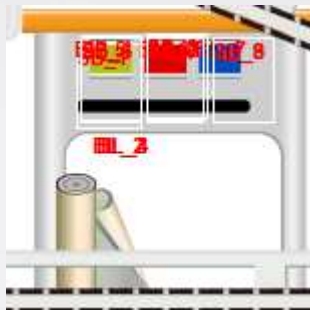


Create another Toggle Switch object, set address to LB-20, and select the

Operation Log

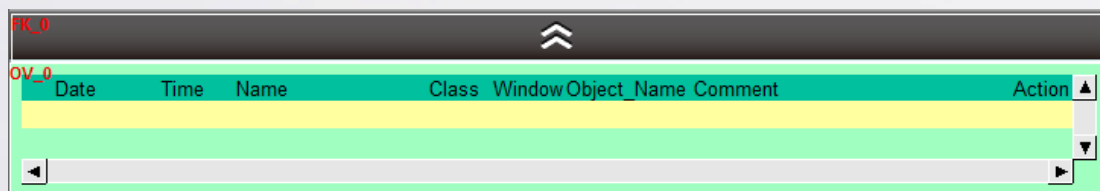
red or blue capsules by turning ON / OFF the Toggle Switch.

The Bit Lamps BL_0 and BL_1 indicate the selected capsule according to the ON / OFF state of LB-20.

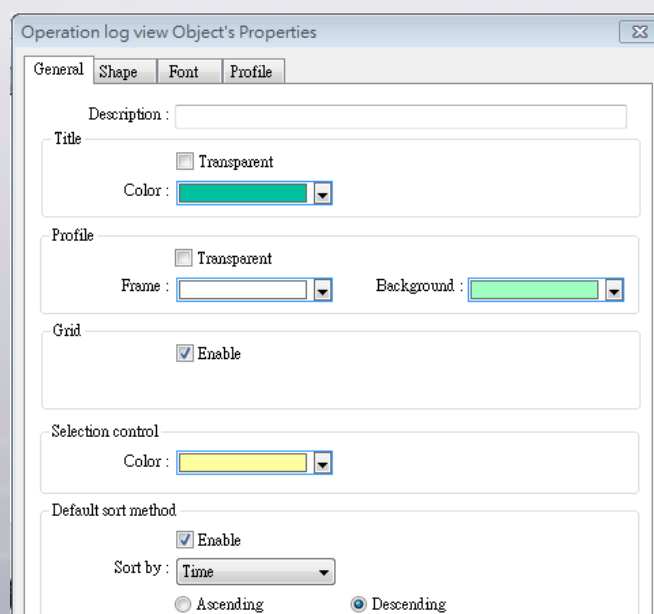


Create Set Bit objects to select the color of the label according the ON / OFF state of addresses LB-1, LB-2, and LB-3, and place the selected label on the bottle.

Step 3. Create an Operation Log object.

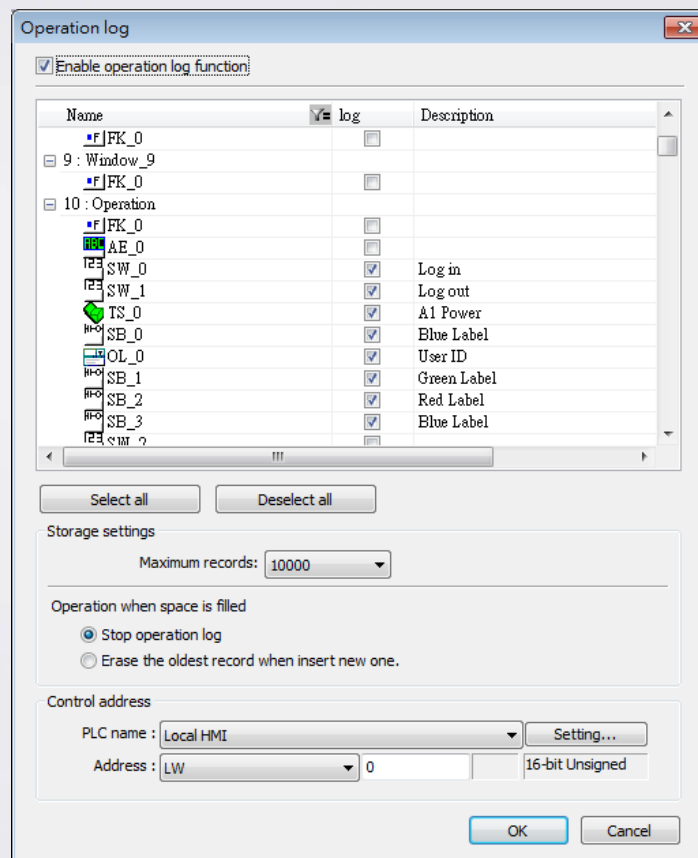


Select the color of each part of Operation Log object and set the sort method to time descending mode. The latest record will be placed on the top of the list.



Operation Log

On the menu click [Objects], point to [Operation log] and click [Operation log settings]. Select the objects to record the operation steps, and enter a description about the object for easier observation.



The dialog box titled "Operation log" contains the following sections:

- Enable operation log function:** A checked checkbox.
- Object List Table:** A table with columns "Name", "log", and "Description".
- Buttons:** "Select all" and "Deselect all".
- Storage settings:** A dropdown for "Maximum records" set to "10000".
- Operation when space is filled:** Two radio buttons: "Stop operation log" (selected) and "Erase the oldest record when insert new one.".
- Control address:** A section with "PLC name" (Local HMI), "Address" (LW 0), and "16-bit Unsigned".
- Buttons:** "OK" and "Cancel".

Name	log	Description
FK_0	<input type="checkbox"/>	
9 : Window_9		
FK_0	<input type="checkbox"/>	
10 : Operation		
FK_0	<input type="checkbox"/>	
AE_0	<input type="checkbox"/>	
SW_0	<input checked="" type="checkbox"/>	Log in
SW_1	<input checked="" type="checkbox"/>	Log out
TS_0	<input checked="" type="checkbox"/>	A1 Power
SB_0	<input checked="" type="checkbox"/>	Blue Label
OL_0	<input checked="" type="checkbox"/>	User ID
SB_1	<input checked="" type="checkbox"/>	Green Label
SB_2	<input checked="" type="checkbox"/>	Red Label
SB_3	<input checked="" type="checkbox"/>	Blue Label
SW_?	<input type="checkbox"/>	