

C5_eMT3105_e-Mail

Table of Contents

1. Overview and Operation
2. Setting up the Screen
3. Addresses

1. Overview and Operation

Overview

This feature is to send event log description via e-Mail to the management person when events occur. The events can be discovered faster through the timely e-Mail notification for easier management.



2. Setting up the Screen

[Page 1]

When an alarm is triggered, e-Mail notification will be sent to the management person.

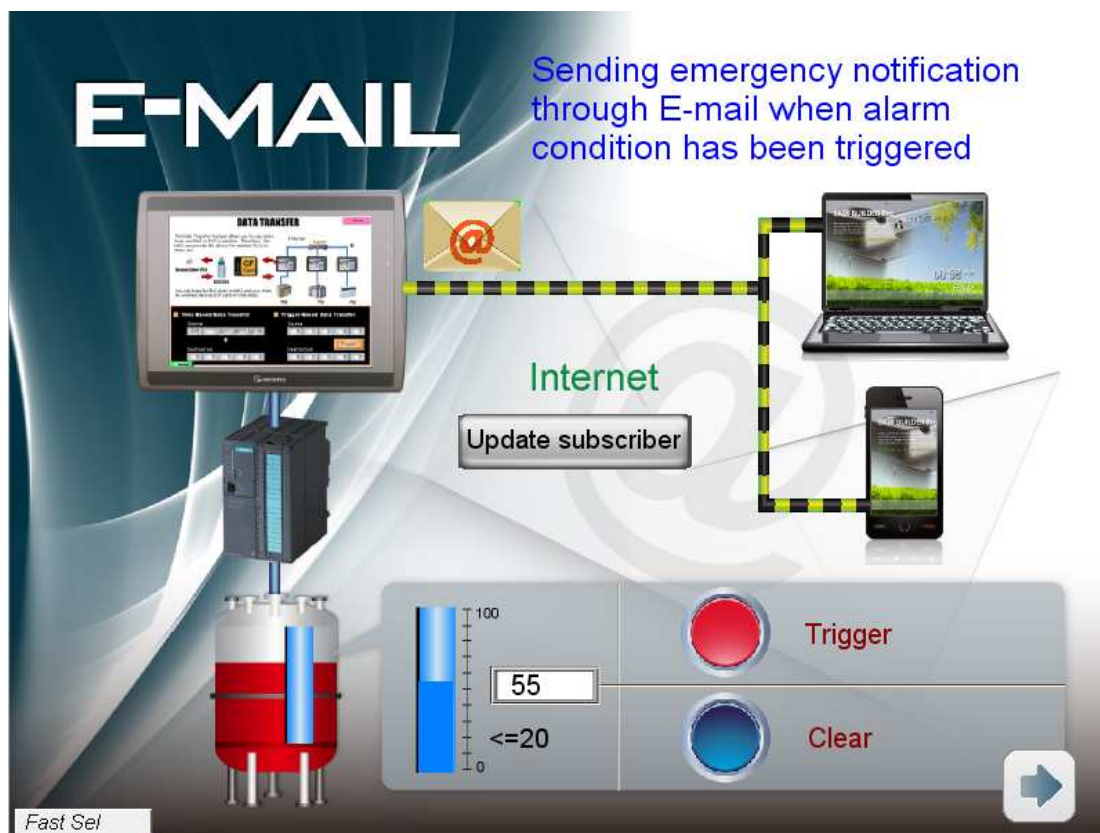
1. [Update subscriber]: select USB or SD to import recipient list.



2. Push red [Trigger] button will stop the value displayed and trigger the event. "Trigger" notification e-Mail will be sent to the recipient.

Push blue [Clear] button will make the value displayed go up and triggered the event. "Clear" notification e-Mail will be sent to the recipient.

Note: To trigger events, the value must be less than or equals to 20.



3. Enabling e-Mail Function:

A. To send e-Mails, go to System Parameter Settings/e-Mail tab to set Sender and Recipient information.

The screenshot shows the 'System Parameter Settings' dialog box with the 'e-Mail' tab selected. The 'Enable e-Mail function' checkbox is checked. The 'SMTP settings' section includes fields for Server (smtp.u-mail.com.tw), Port (25), User name (eMT3000@weintek.com), Password (*****), and Confirm Password (*****). There are also checkboxes for 'Log on using Secure Password Authentication (SPA)' (checked) and 'Use the following type of encrypted connection' (unchecked), with a dropdown menu showing 'TLS'. The 'Sender information' section has a 'Name' field with 'eMT3000' and a 'Mail address' field with 'eMT3000@weintek.com'. A link 'Open contact settings' is at the bottom.

Device	Model	General	System Setting	Security	Font
Extended Memory		Printer/Backup Server		e-Mail	

☒ Enable e-Mail function

SMTP settings

Server : smtp.u-mail.com.tw

Port : 25

User name : eMT3000@weintek.com

Password : *****

Confirm Password : *****

☒ Log on using Secure Password Authentication (SPA)

☐ Use the following type of encrypted connection

TLS

Sender information

Name : ☐ Use HMI name

eMT3000

Mail address : eMT3000@weintek.com

[Open contact settings](#)

B. When creating Event Log go to e-Mail tab to set Recipient Groups.

The screenshot shows the 'Alarm (Event) Log' dialog box with the 'e-Mail' tab selected. It contains a table with columns 'Enable', 'Condition', and 'Recipients'. Below the table is a 'Recipients' section with 'To...', 'Cc...', and 'Bcc...' buttons, each followed by a text field containing 'Group B'. The 'Subject' section has a checkbox 'Use alarm content as subject' (checked) and a 'Subject' field with the text 'Tank level low, level=%(WATCH1)d.0'.

Enable	Condition	Recipients
<input checked="" type="checkbox"/>	Send while alarm triggered	Group B
<input checked="" type="checkbox"/>	Send while alarm cleared	Group B

Recipients

To... Group B

Cc...

Bcc...

Subject

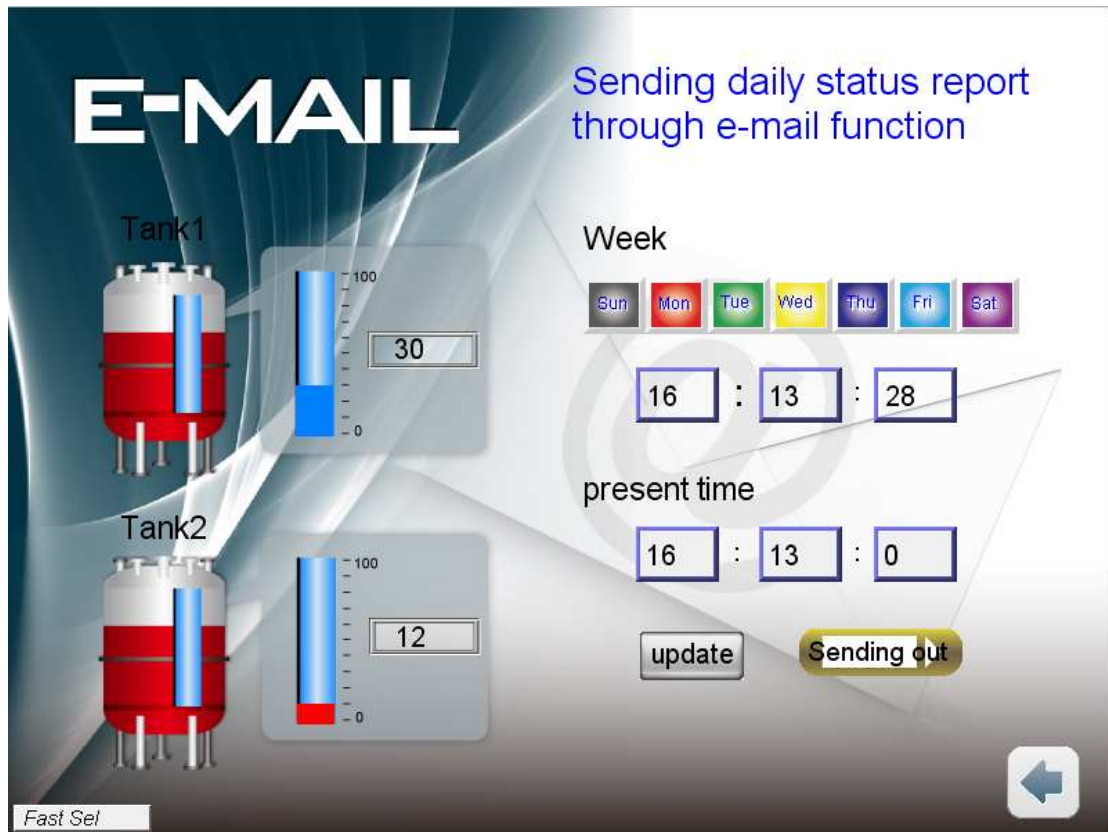
☒ Use alarm content as subject

Subject : Tank level low, level=%(WATCH1)d.0

[Page 2]

Send daily status report through e-Mail function.

Click [update] to add 15 seconds to "present time". When time is up, the "Sending out" sign will light up. "Trigger" notification e-Mail will be sent to the recipient.



3. Addresses

The object addresses used in this demo project are listed below, the addresses and object ID can be modified based on actual usage.

Object	Address	Object ID	Description
Window 4			
Toggle Switch	LB-9015	TS_0	FS window/button control [hide (ON)/show(OFF)]
	LB-9020	TS_1	Show (set ON)/hide (set OFF) system setting bar
Window 10			
Numeric Input	LW-0	NE_0	
Bar Graph	LW-0	BG_0	
Moving Shape	LW-100	MV_0	e-Mail icon moves
Bit Lamp	LB-100	BL_0	
Set Word	LW-0,disable periodic setword:LB200	SW_0	
Function Key		FK_0	Execute macro_0
Set Word	LW-0	SW_1	Set when window opens
Set Bit	LB-100	SB_0	
Function Key		FK_1	Switch to window 13
		FK_2	Import user data
Direct Window	LW_Bit-921600	WC_0	Switch to window 18
	LW_Bit-921601	WC_1	Switch to window 19
	LW_Bit-921602	WC_2	Switch to window 20
Set Bit	Disable periodic	SB_1	Set ON

	setword:LB200		
Function Key		FK_3	Execute macro_4
		FK_4	Execute macro_3
Window 13			
Numeric Input	LW_10	NE_0	Tank1
	LW_20	NE_1	Tank2
Function Key		FK_0	Switch to window 10
Set Bit	RW_Bit-0	SB_0	Set to Momentary Mode
Bit Lamp	LB-10	BL_0	
Set Word	LW_10	SW_0	Tank1 value (Periodic bounce)
	LW_20	SW_1	Tank2 value (Periodic bounce)
Toggle Switch	RW_Bit-30,RW_Bit-30	TS_0	Set Sunday
	RW_Bit-31,RW_Bit-31	TS_1	Set Monday
	RW_Bit-32,RW_Bit-32	TS_2	Set Tuesday
	RW_Bit-33,RW_Bit-33	TS_3	Set Wednesday
	RW_Bit-34,RW_Bit-34	TS_4	Set Thursday
	RW_Bit-35,RW_Bit-35	TS_5	Set Friday
	RW_Bit-36,RW_Bit-36	TS_6	Set Saturday
Numeric Input	RW-4	NE_2	
	RW-5	NE_3	
	RW-6	NE_4	
Set Word	RW-3	SW_2	Set when window opens
Bit Lamp	RW_Bit-10	BL_1	
Numeric	LW-9019	ND_0	Local hour

Display			
	LW-9018	ND_1	Local minute
	LW-9017	ND_2	Local second
Bar Graph	LW-10	BG_0	Tank1
	LW-20	BG_1	Tank2
Function Key		FK_1	Execute macro_2
Window 18			
Set Bit	LW_Bit-921600	SB_0	Set OFF
Window 19			
Set Bit	LW_Bit-921601	SB_0	Set OFF
Window 20			
Set Bit	LW_Bit-921602	SB_0	Set OFF
Window 21			
Function Key	Import from usb1:LW_Bit20000	FK_0	Import user data (USB1 disk)
Option List	Import data source:LW200	OL_0	
Function Key	Import from sd:LW_Bit20001	FK_1	Import user data (SD card)
Set Word	Import data source:LW200	SW_0	Set when window opens
Function Key		FK_2	Close window
		FK_3	Close window, send command when button released
		FK_4	Close window, send command when button released