

# User Manual

cMT Viewer Startup Guide

## Table of Contents

cMT Viewer App .....	1
System Requirements.....	1
1. Introduction of icons .....	2
2. How to load project file to cMT Viewer .....	3
3. How to open cMT Viewer settings page .....	6
4. Monitor Mode .....	12
5. Settings in the Window that Displays HMI Screen .....	14

## cMT Viewer App

cMT Viewer can connect and control cMT / cMT X Series HMI models. The devices that support cMT Viewer include: cMT-iV5/cMT-iV6 (Built-in), iPad/iPhone (Download from APP Store), Android (Download from Google Play), Windows (in EasyBuilder Pro installation directory).

## System Requirements

PC Operating System:

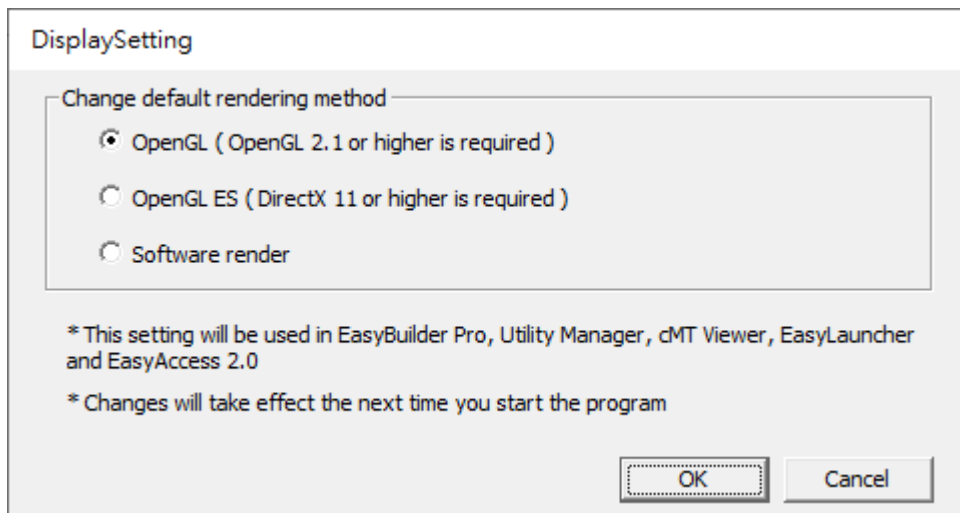
Windows® 7 SP1 (32bit / 64bit), Windows® 8 (32bit / 64bit), Windows®8.1 (32bit / 64bit), Windows® 10 (32bit / 64bit)

Minimum Hardware Requirement:

RAM 2G (Recommended)

Display Setting:






When encountering display issues, please execute DisplaySetting.exe in the installation folder and change rendering method to “Software render”.



Please note that:

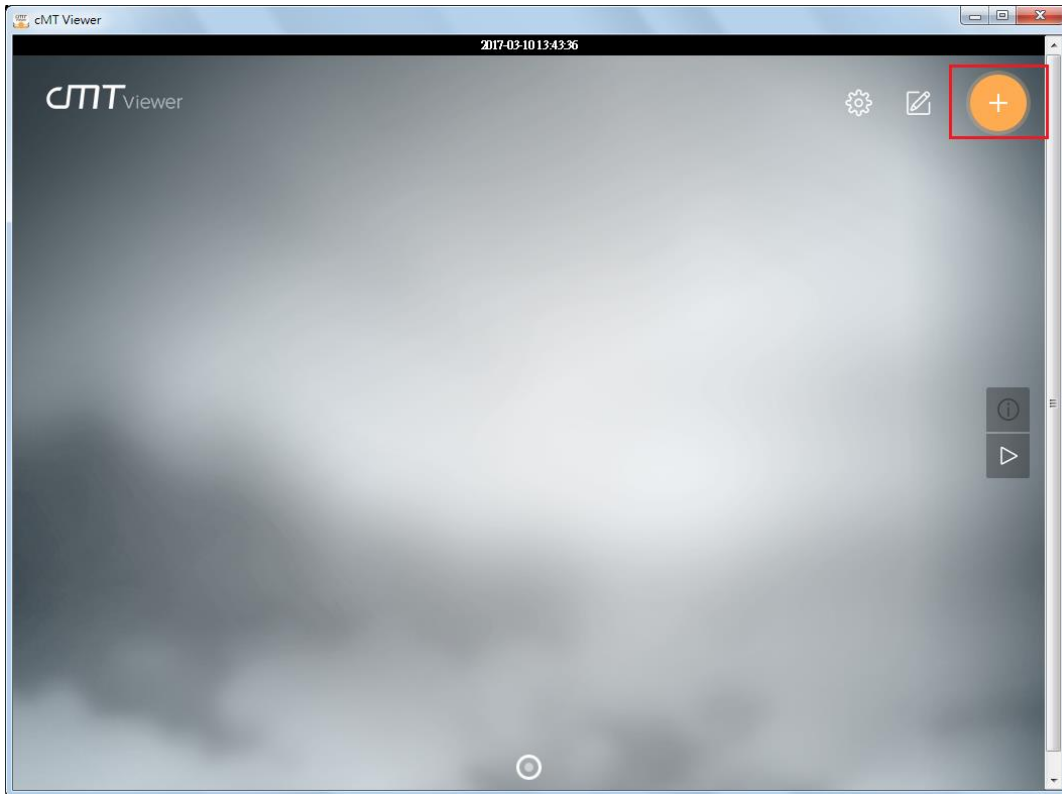
1. Each cMT Viewer device can simultaneously connect with 4 cMT / cMT X Series models.
2. Each cMT Viewer device can simultaneously monitor 50 cMT / cMT X Series models (under Monitor Mode).
3. Each cMT / cMT X Series model can simultaneously connect with 3 cMT Viewer devices.

**1. Introduction of icons**

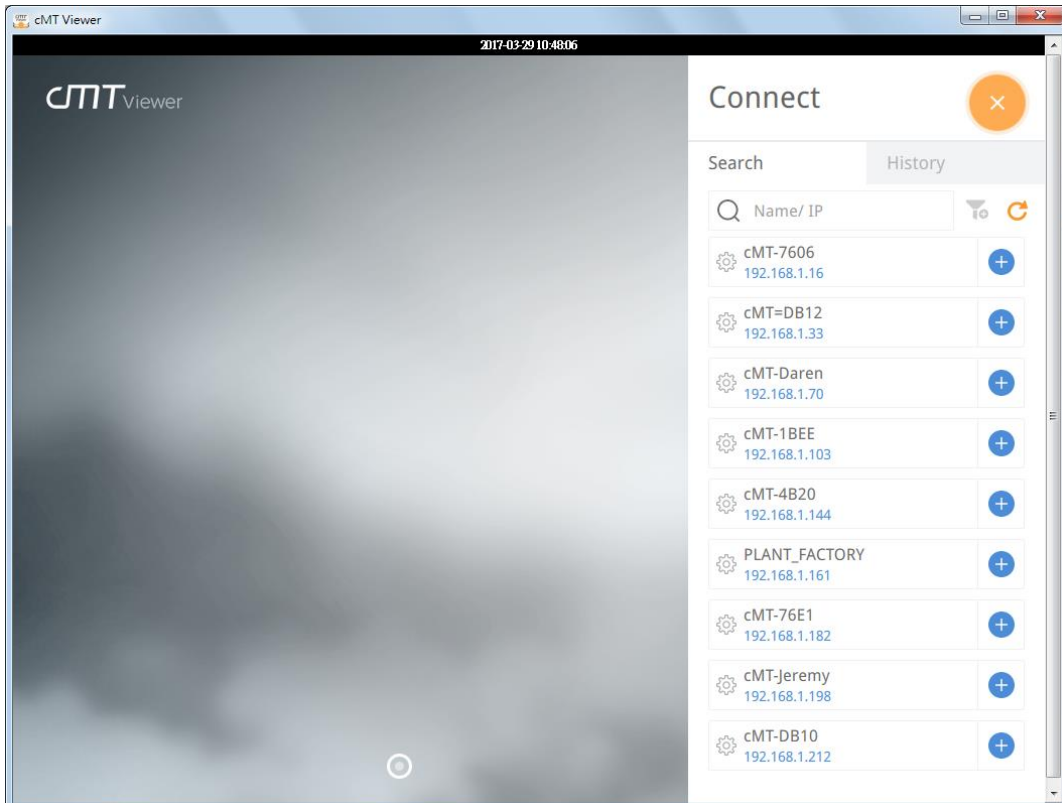
Icon	Description
	<p>Tap this icon to run cMT Viewer App.</p>
	<p>Tap the Start Button when running the project to return to cMT Viewer home screen.</p>
	<p>Tap this icon to configure cMT Viewer.</p>
	<p>Tap this icon to change screen layout in Monitor Mode.</p>
	<p>Tap this icon to search for all cMT / cMT X Series HMIs on the same network.</p>


## 2. How to load project file to cMT Viewer

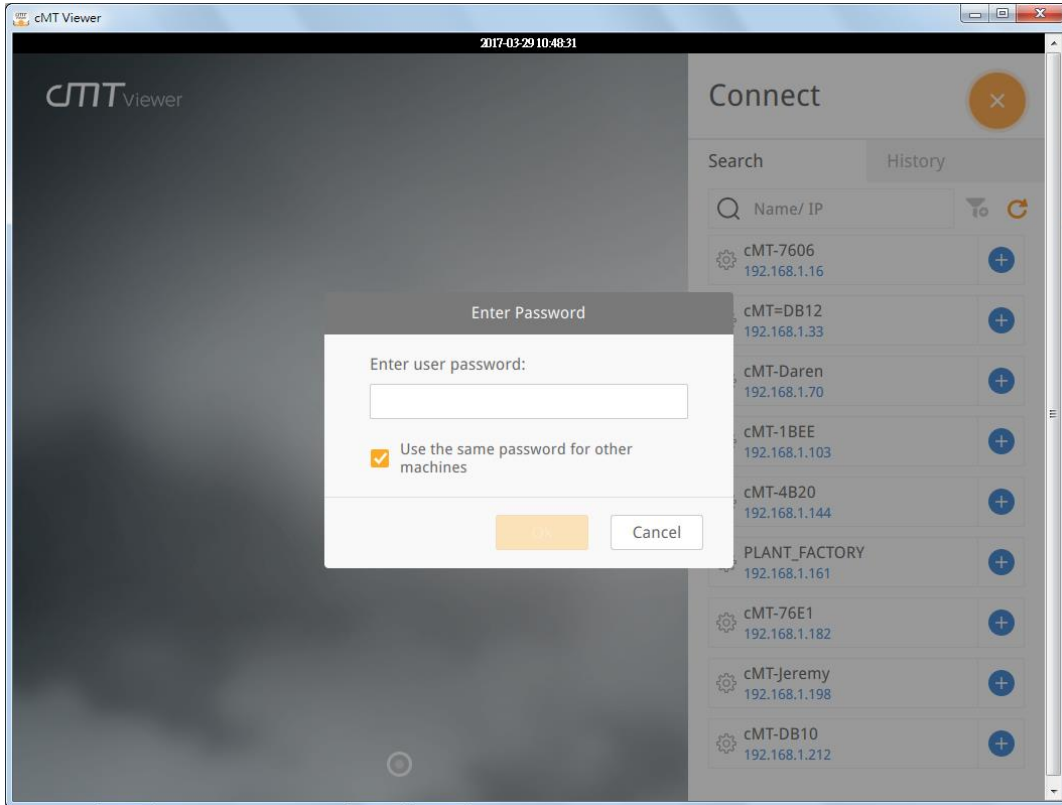
Step 1. Launch cMT Viewer App and tap the + button as shown below.



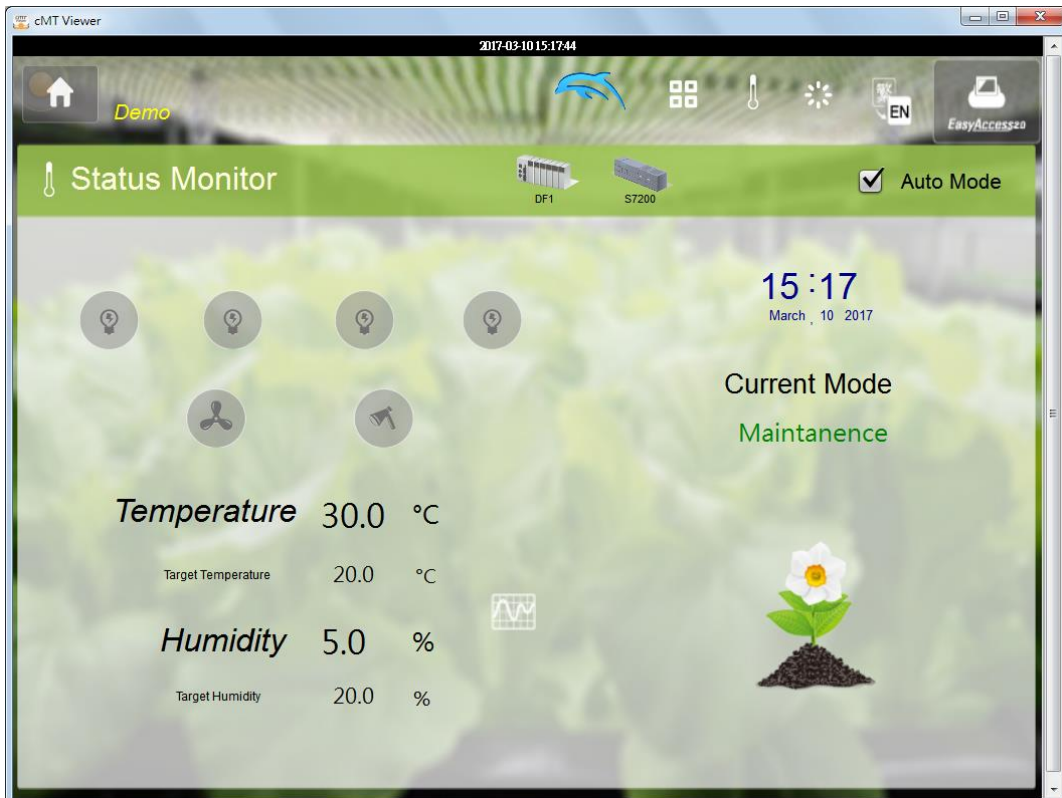
Step 2. Search for all the cMT / cMT X Series HMI on the same network.



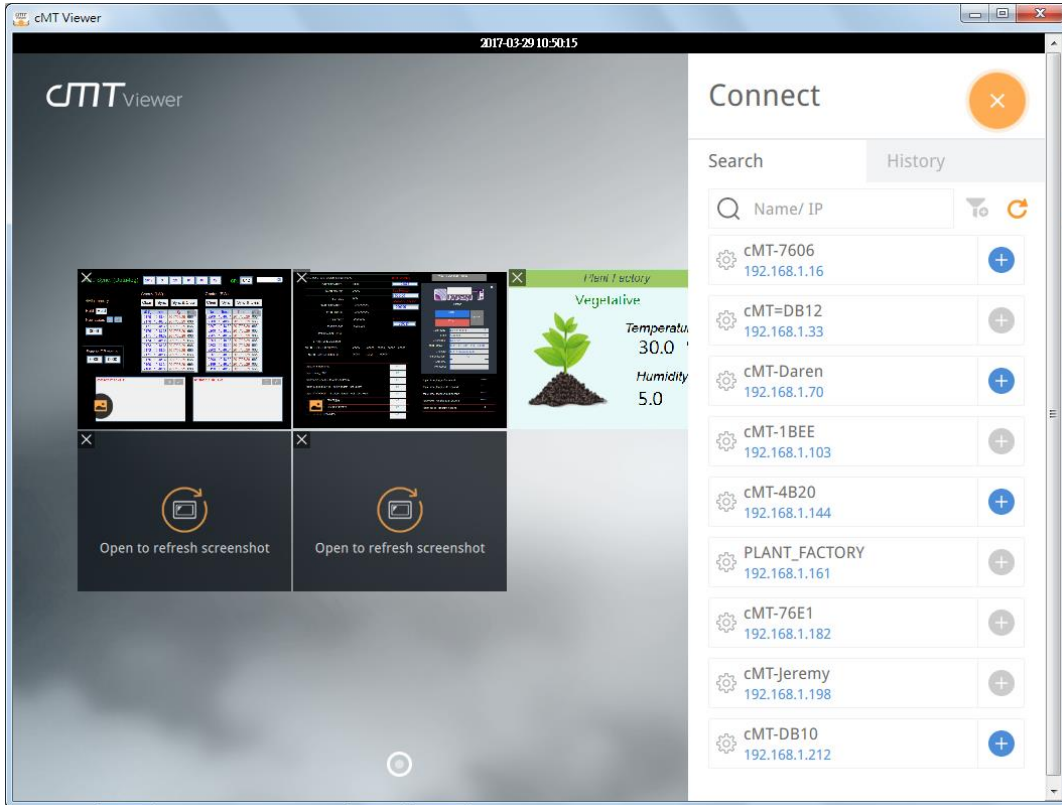
Step 3. Select an HMI, tap  and then enter password. If [Use the same password for other machines] checkbox is selected, entering password will not be necessary when adding other HMI that uses the same password.




Step 4. When finished, cMT Viewer will display the project.

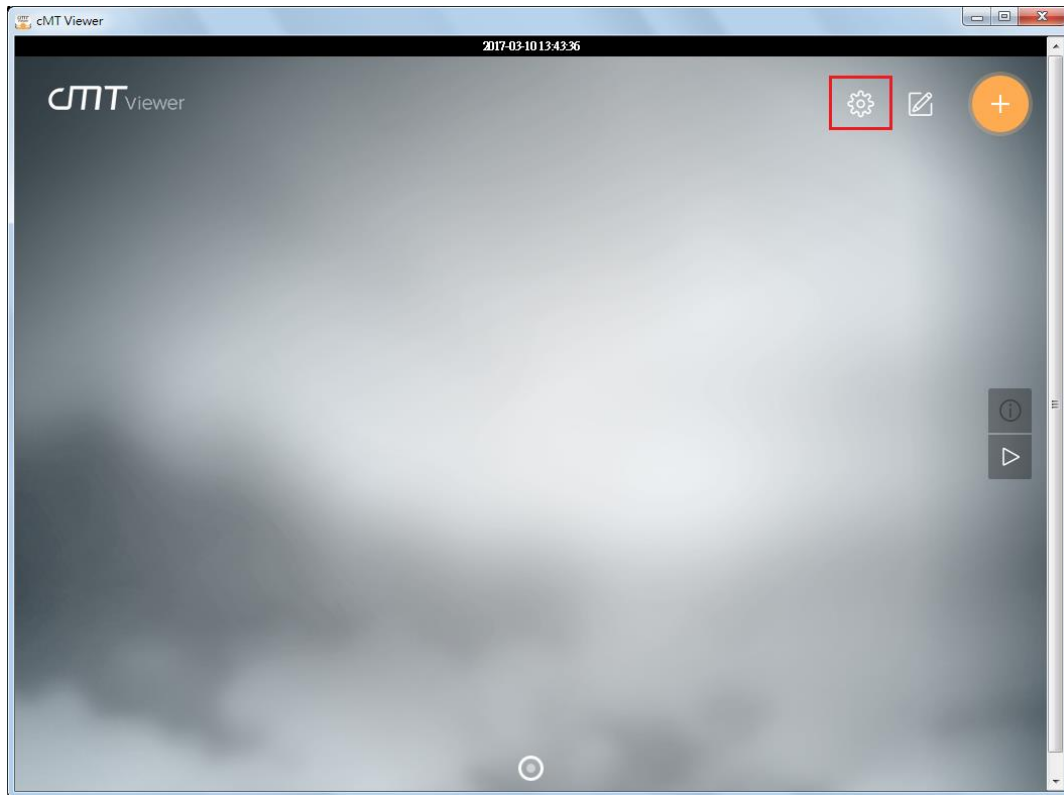


Tap Start Button to return to main screen. To connect another HMI, follow the preceding steps to search for HMI and load the project. The + button of the connected HMI will turn grey:

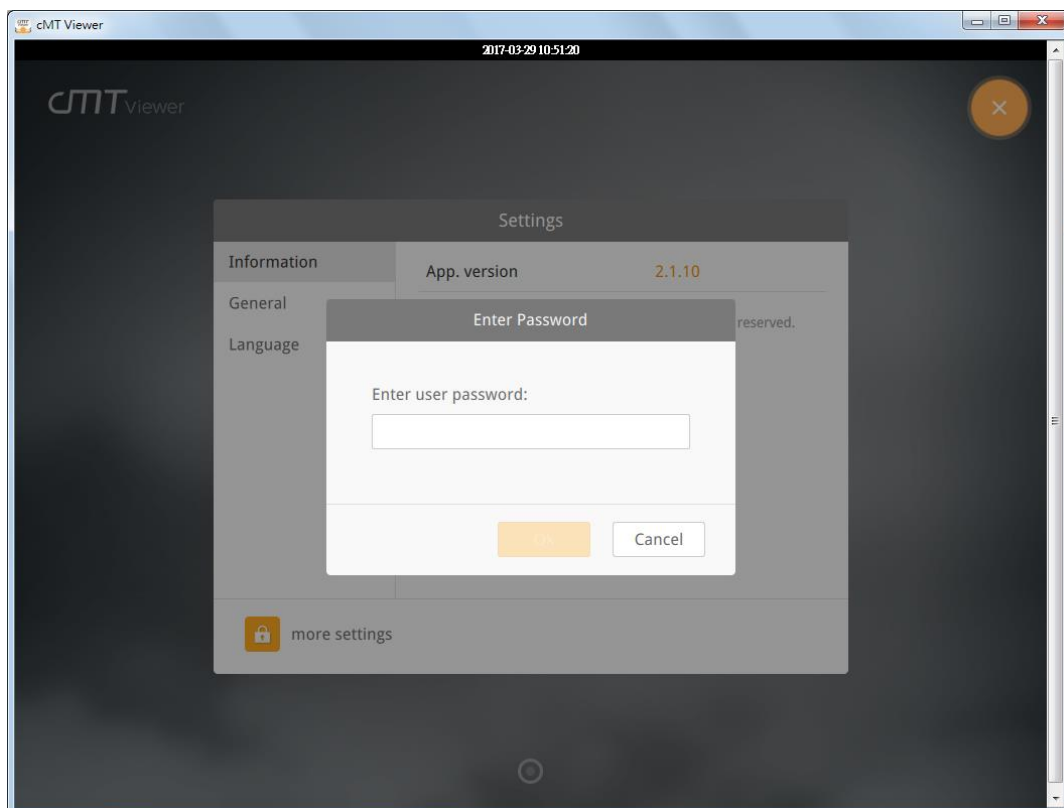


### 3. How to open cMT Viewer settings page

Step 1. In cMT Viewer main screen tap  icon.



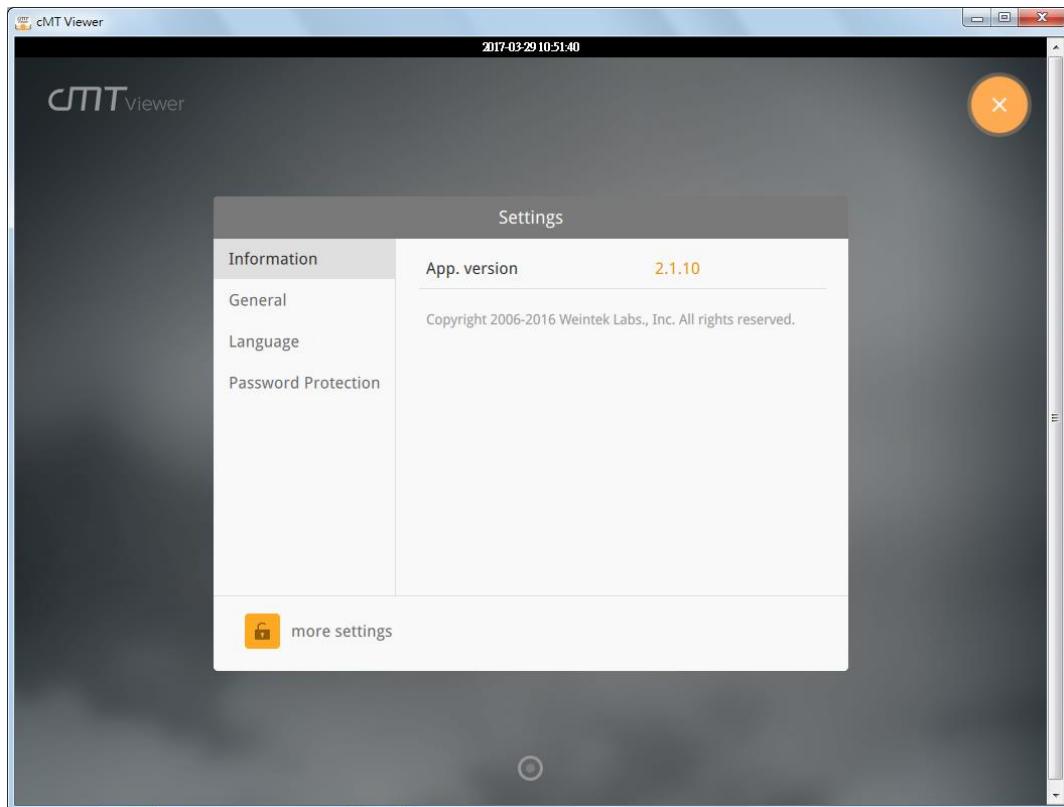
Step 2. Enter password to open [more settings].





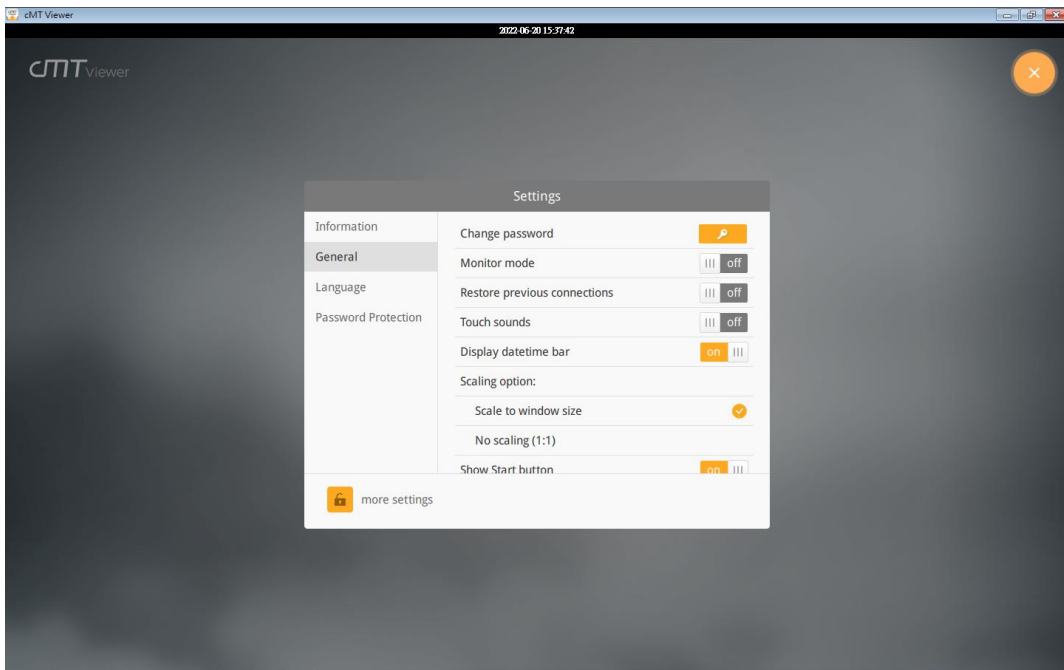
## Information

cMT Viewer version information.



## General

cMT Viewer display settings.



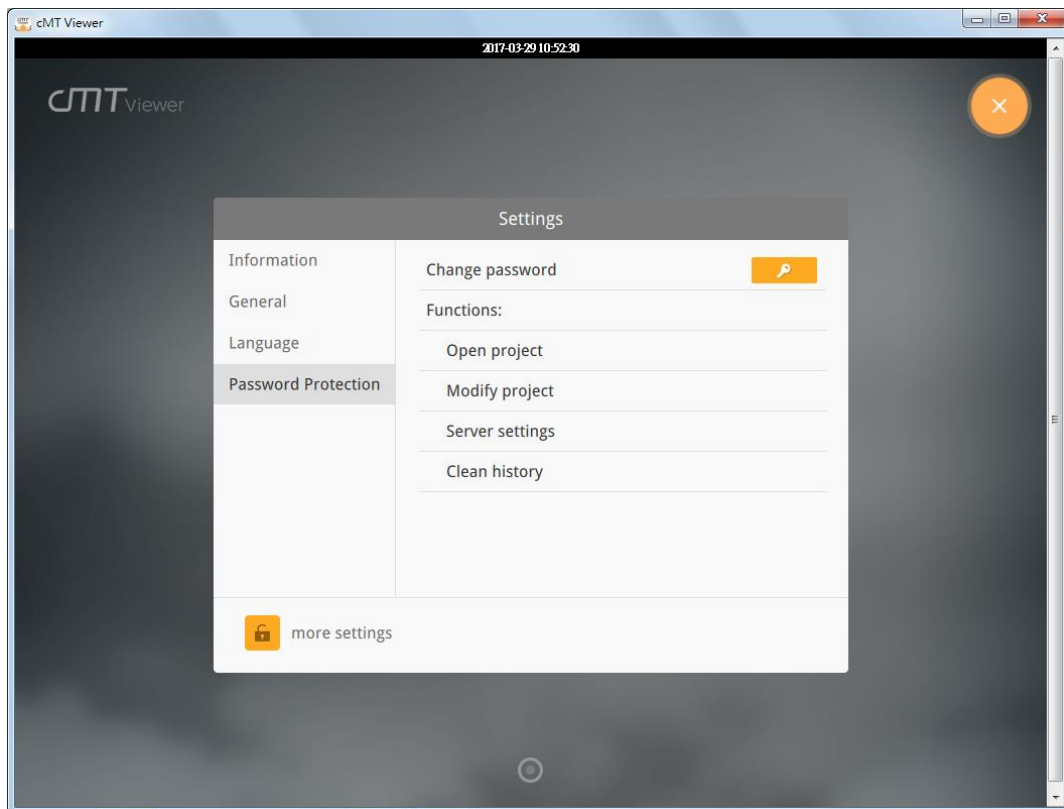
## Language

cMT Viewer interface language menu.



### Password Protection

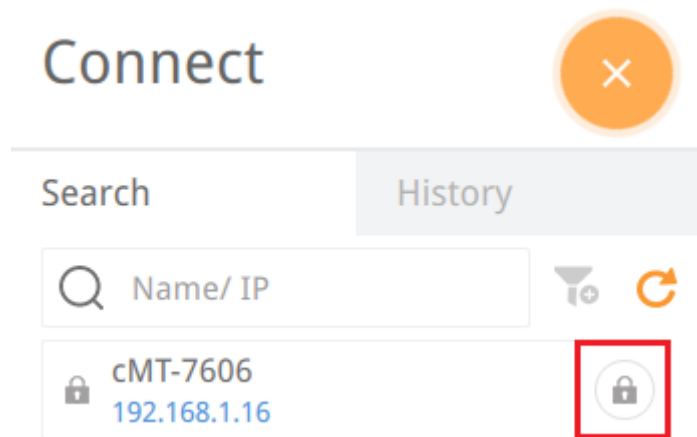
After setting, entering password will be necessary for using these functions.



### Open project

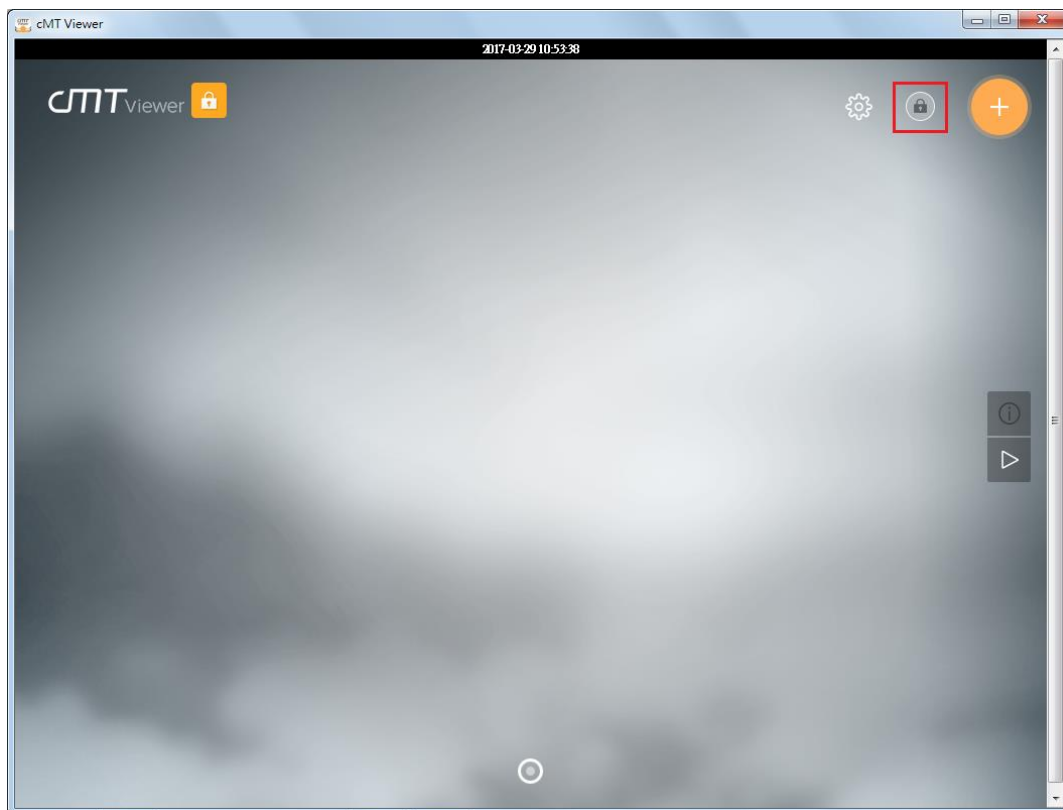
If this function is protected by password, adding a new cMT / cMT X Series HMI will require

password.



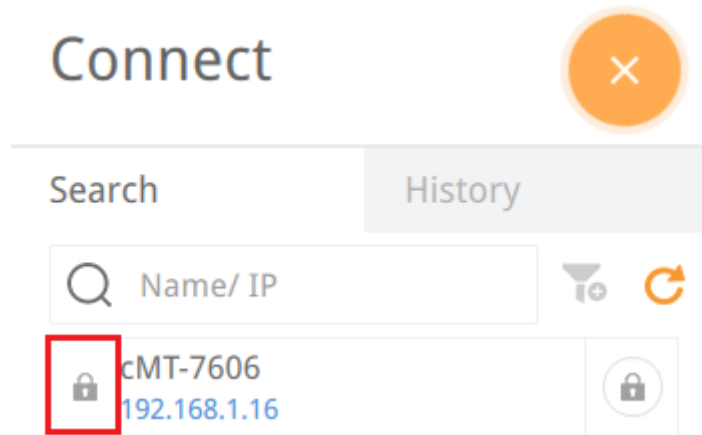
### Modify project

If this function is protected by password, changing layout of Monitor Mode will require password.



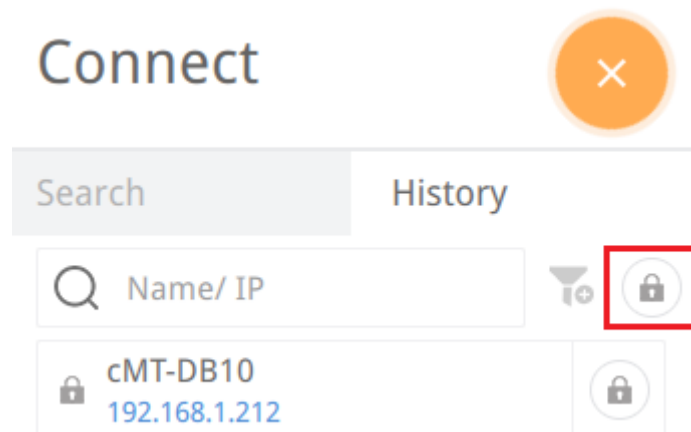
### Server settings


If this function is protected by password, entering cMT / cMT X HMI's system settings using cMT Viewer will require password.

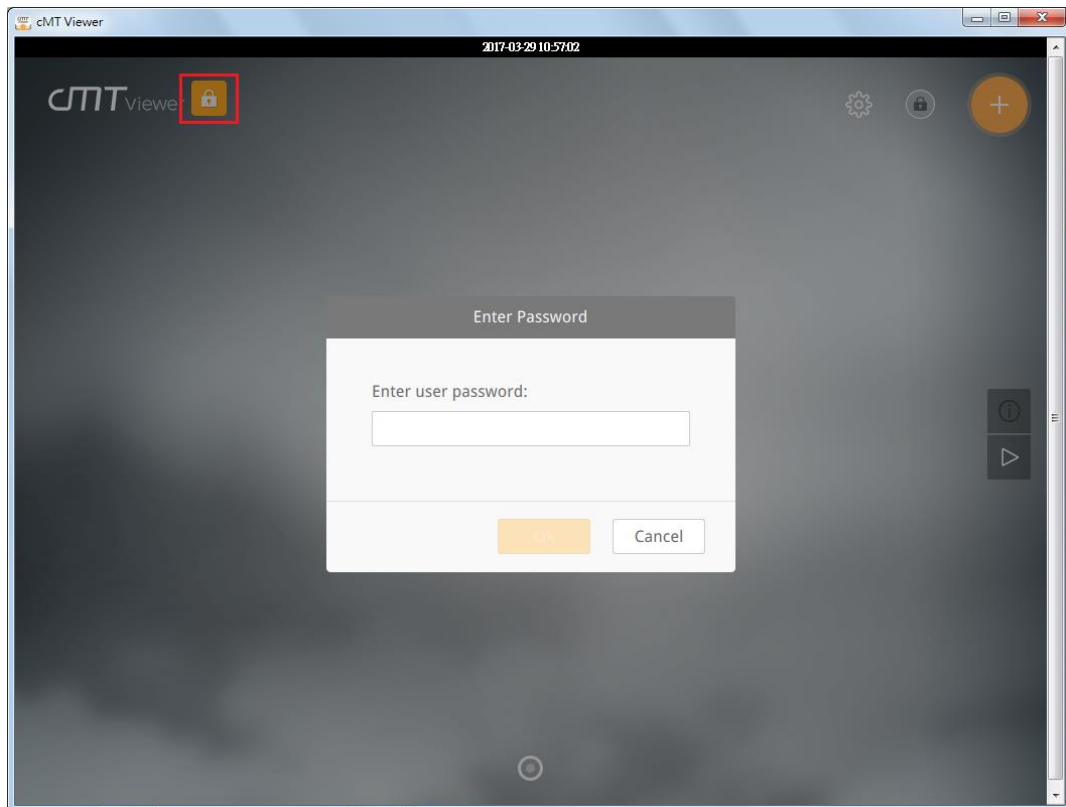



### Clear history

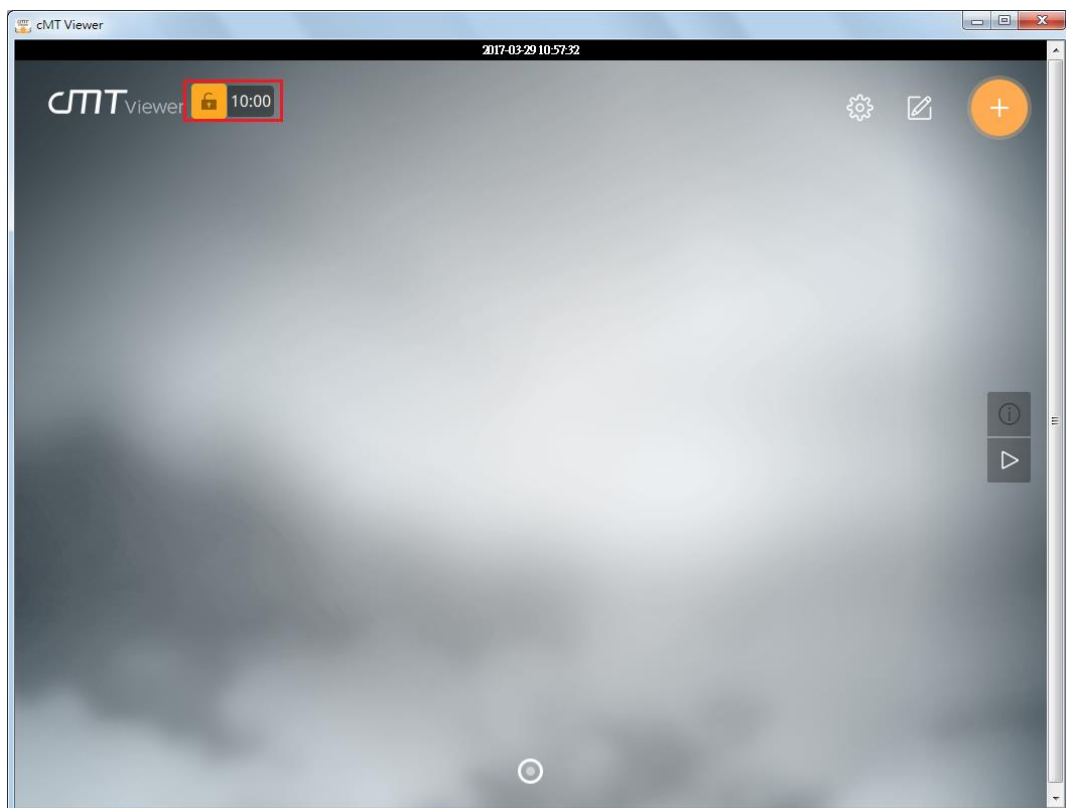
If this function is protected by password, clearing connection history in History page will require password.



To use password protected functions, tap the lock icon  in the upper left corner and enter password.



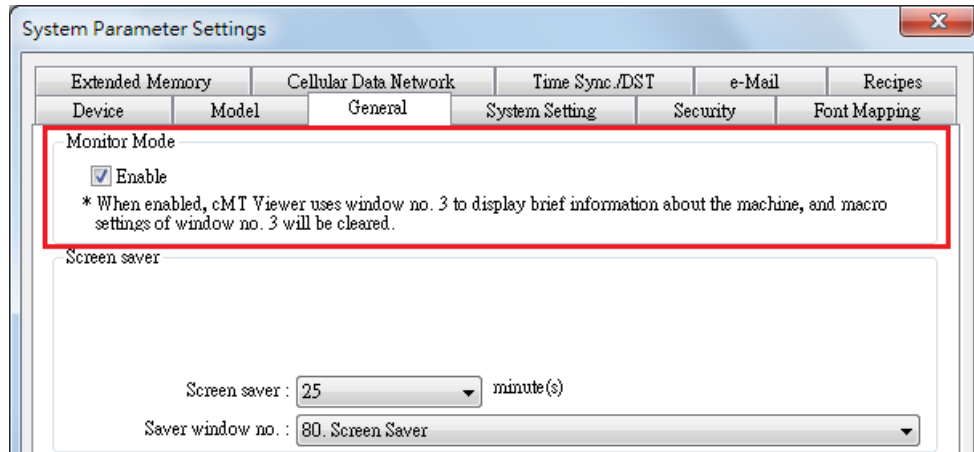
After entering password, cMT Viewer will start a countdown timer of 10 minutes, when it's over, the functions protected by password will be locked again. The countdown timer can be reset by tapping any button in cMT Viewer. To reset the timer to zero, tap .



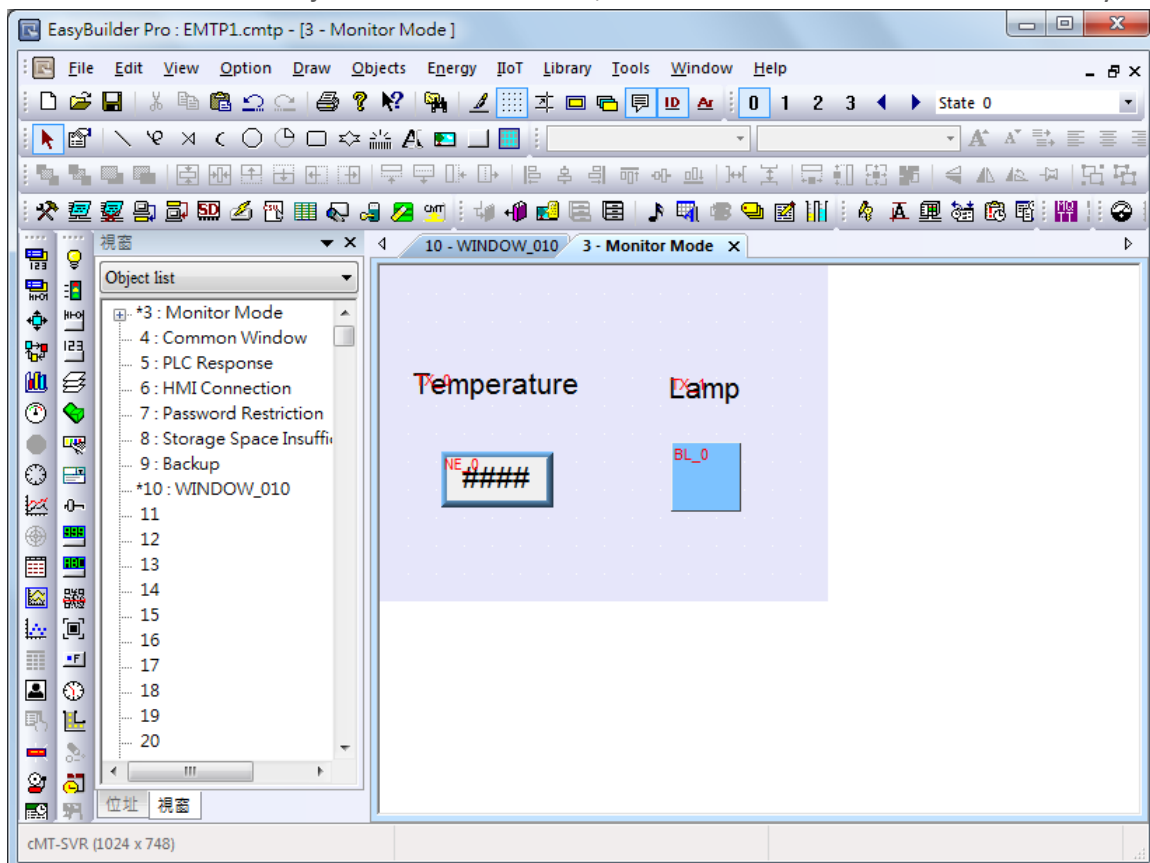
#### 4. Monitor Mode

cMT Viewer supports Monitor Mode. By placing objects in Window no. 3 in the project, cMT Viewer screen can be refreshed dynamically. In Monitor Mode, the user can select up to 50 HMIs to monitor simultaneously, without the need for accessing each cMT / cMT X HMI.

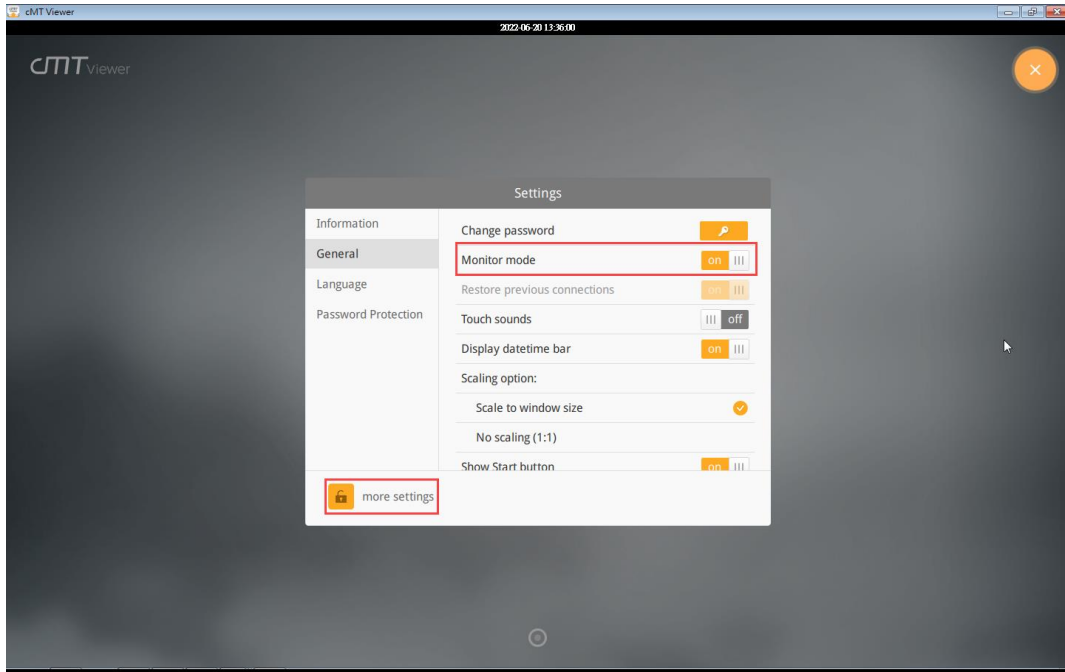
Step 1. Enable Monitor Mode in EasyBuilder Pro » System Parameter Settings » General tab.



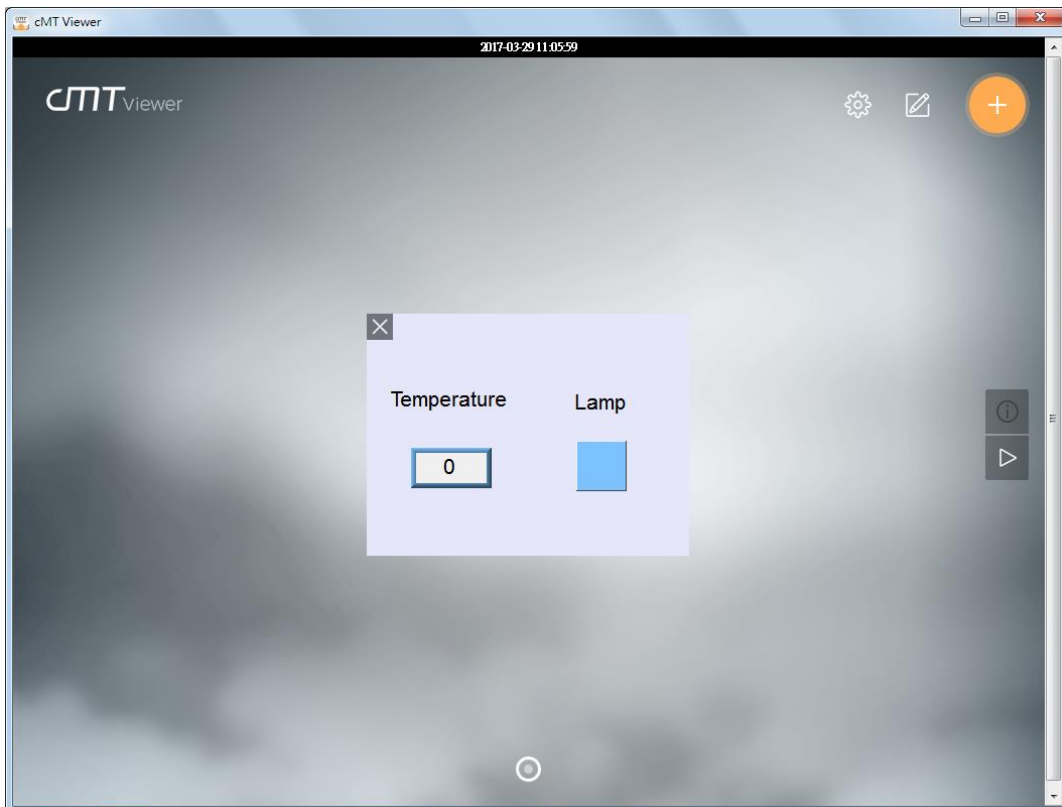
Step 2. Add the needed objects in Window No. 3, which is the Monitor Mode window by default.



Step 3. Open [more settings] in cMT Viewer, go to General page and enable [Monitor mode].

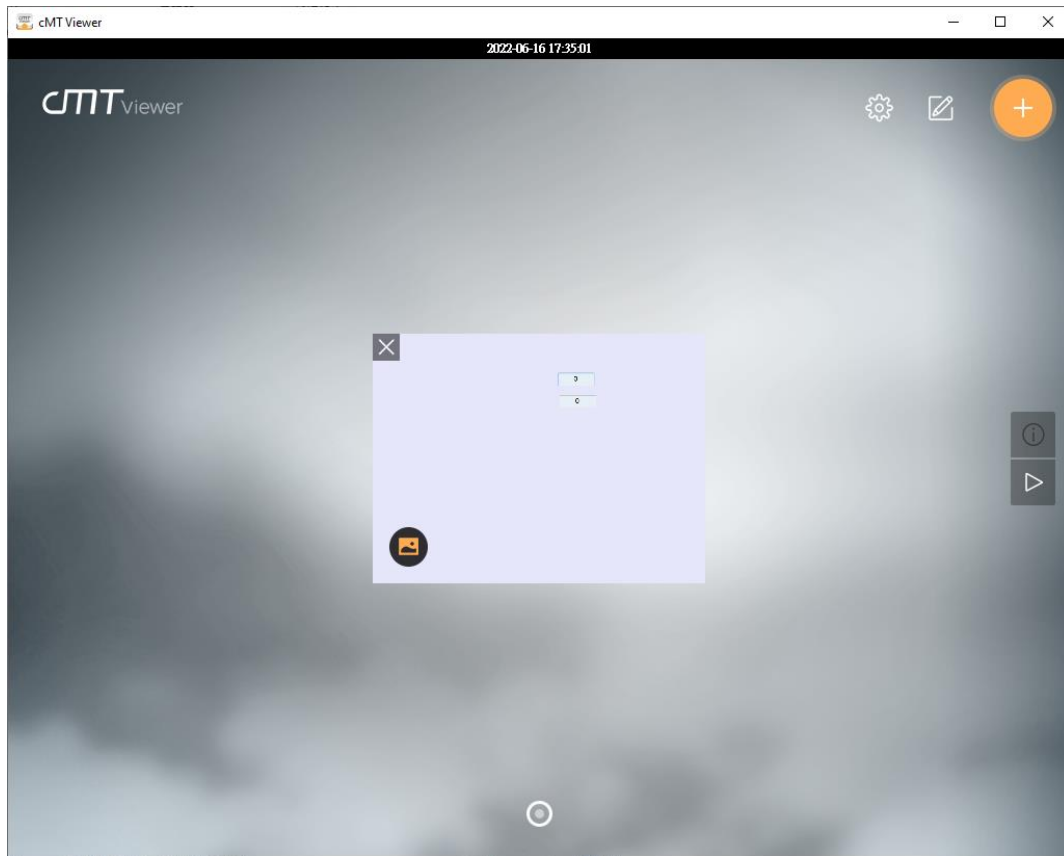


Step 4. Download the project file to HMI using cMT Viewer and then the Monitor Mode window appears.

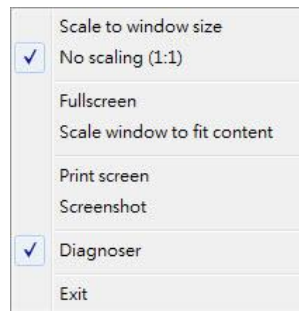


### 5. Settings in the Window that Displays HMI Screen

Step 1. In cMT Viewer add a cMT / cMT X HMI.

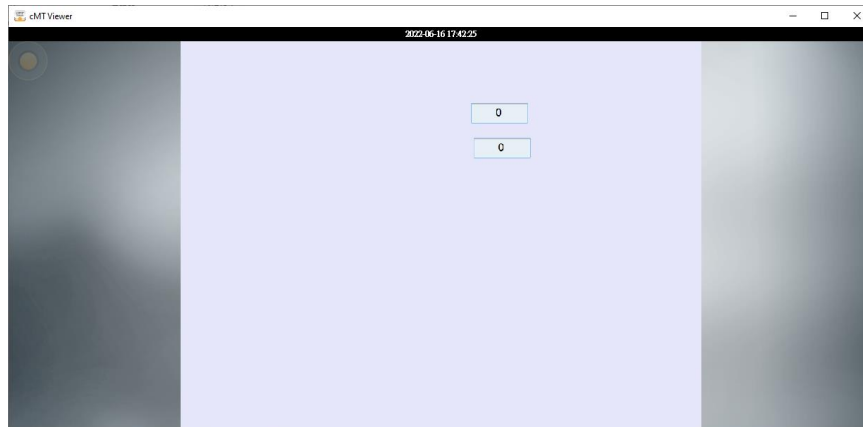


Step 2. Right-click in the window that displays the HMI screen to open the menu below.



#### Scale to window size

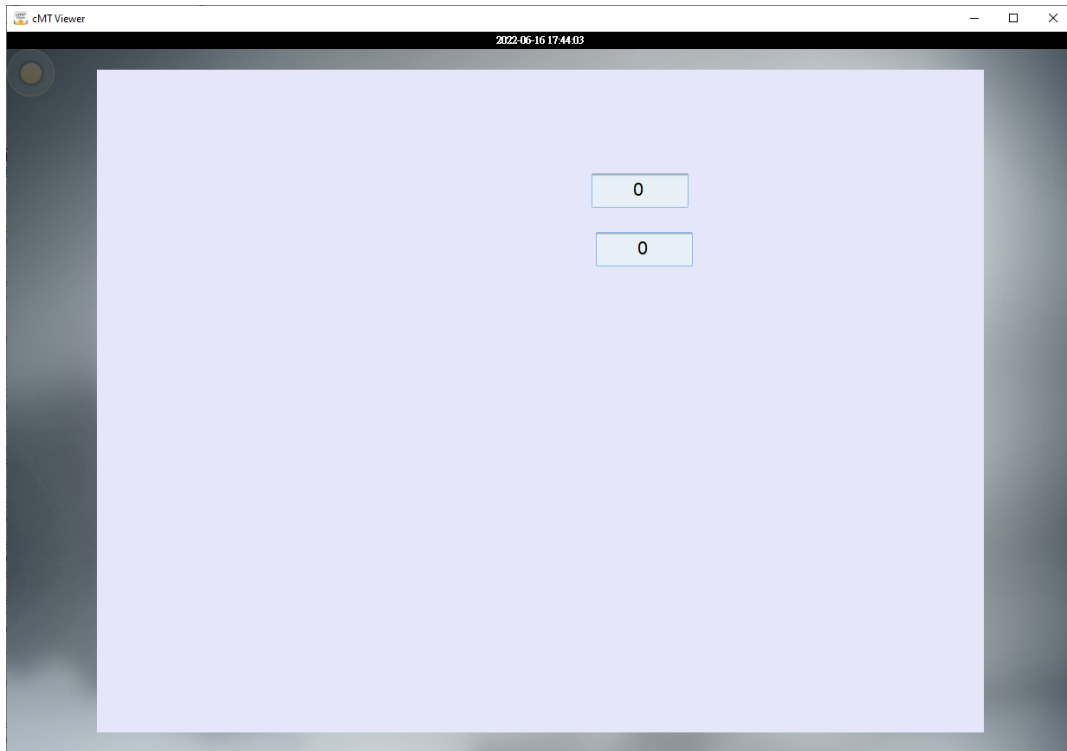
Resize the HMI screen to fit in cMT Viewer window without changing its aspect ratio.





**No scaling (1:1)**

Display the HMI screen in true scale (1:1) even when the size of the cMT Viewer window is changed.

**Fullscreen**

Display cMT Viewer window in full-screen mode.

**Scale window to fit content**

Resize the cMT Viewer window according to the true scale (1:1) of the HMI screen.

**Print screen**

Open the printer settings window to print out the current screen image.

**Screenshot**

Take a screenshot and store it in the screenshot folder in EasyBuilder Pro's installation folder.

**Diagnoser**

Open the window of the diagnostic tool.