

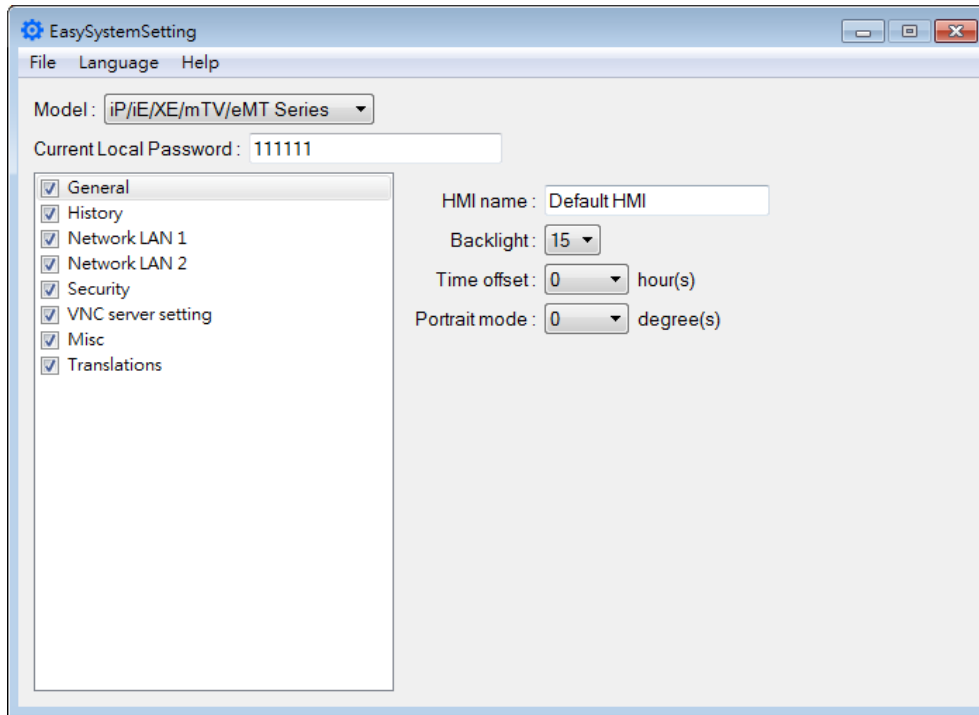
# 28. EasySystemSetting

This chapter explains how to use EasySystemSetting.

|  |      |
|--|------|
| 28.1. EasySystemSetting .....            | 28-2 |
| 28.2. Configuring EasySystemSetting..... | 28-5 |

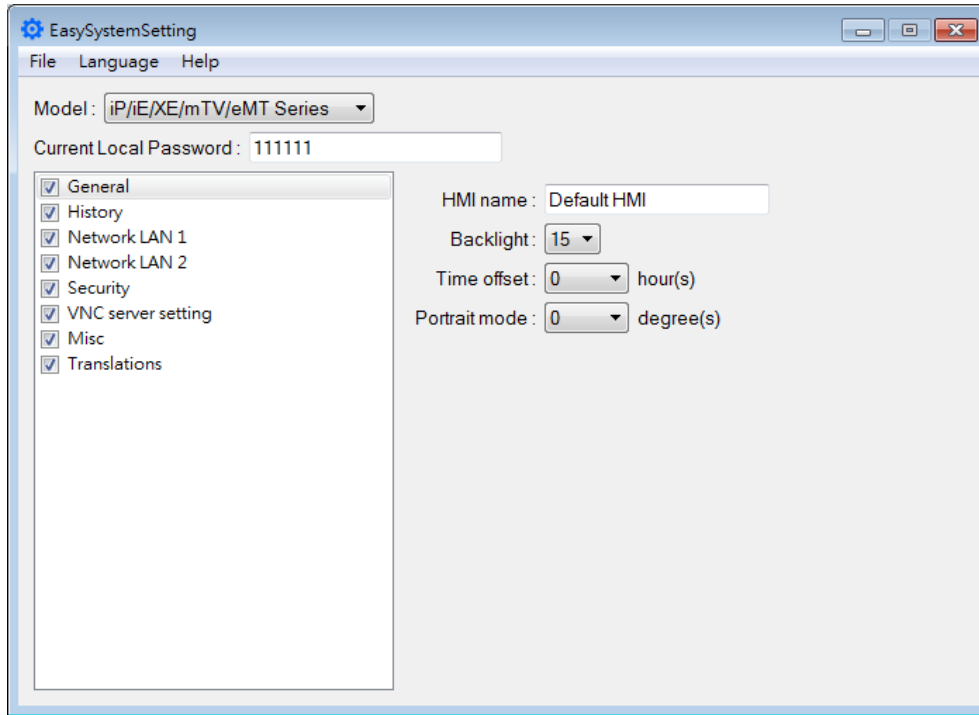
## 28.1. EasySystemSetting

EasySystemSetting allows updating hardware system settings by using a SD card or USB drive. EasySystemSetting can be opened by clicking EasySystemSetting.exe under EasyBuilder Pro installation directory, or clicking [Tool] » [SystemSetting] Editor in EasyBuilder Pro. The feature is available for HMI OS version 20131106 or later.



| Setting         | Description   |
|-----------------|---|
| <b>File</b>     | [New] Restore default settings.<br>[Load] Import and edit an existing .conf file.<br>[Save] Export the configured data to a .conf file. |
| <b>Language</b> | Change the language used in EasySystemSetting.  |
| <b>Help</b>     | [About] Shows version information of EasySystemSetting.   |

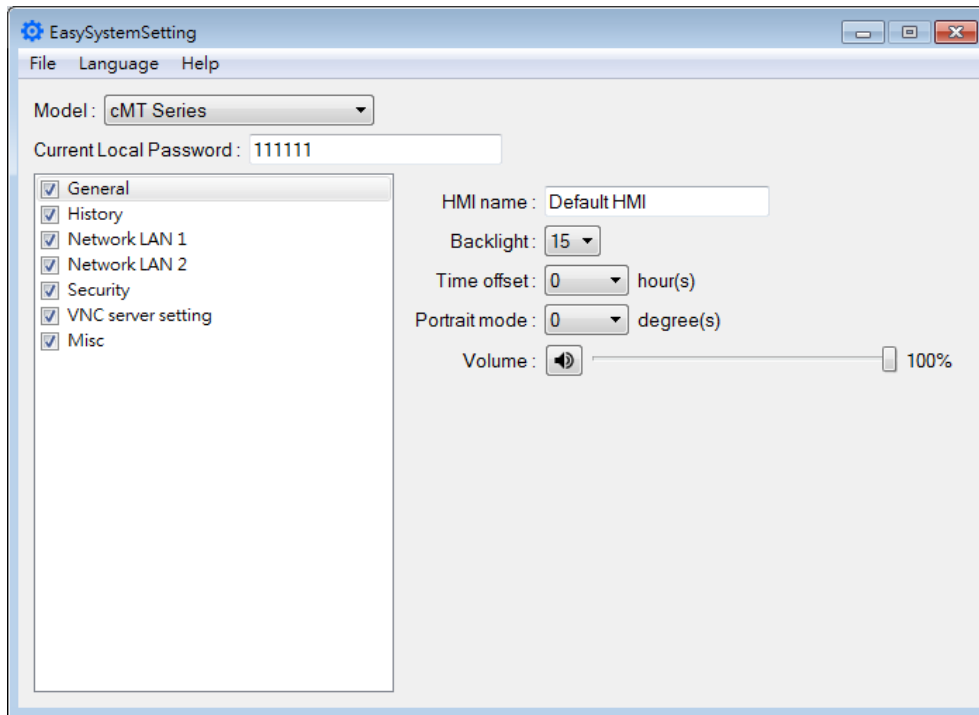
## iP/iE/XE/mTV/eMT Series



Since the description of system settings can be found in Chapter 4, the following introduces only the General tab.

| Setting                       | Description  |
|-------------------------------|--|
| <b>Current Local Password</b> | Please enter the password used to log in System Parameter Settings.  |
| <b>General</b>                | <p>[HMI name] Enter HMI name. The name should only contain [A~Z], [a~z], [0~9], [-] and [.]</p> <p>[Back light] Adjust LCD backlight brightness.</p> <p>[Time offset] Set the HMI RTC with offset.<br/>For example, if the current RTC time is 15:00:00, and the time offset is set to -3, the updated time will be 12:00:00.</p> <p>[Portrait mode] Set the display mode.</p> |

## cMT/cMT X Series



Since the description of system settings can be found in Chapter 4, the following introduces only the General tab.

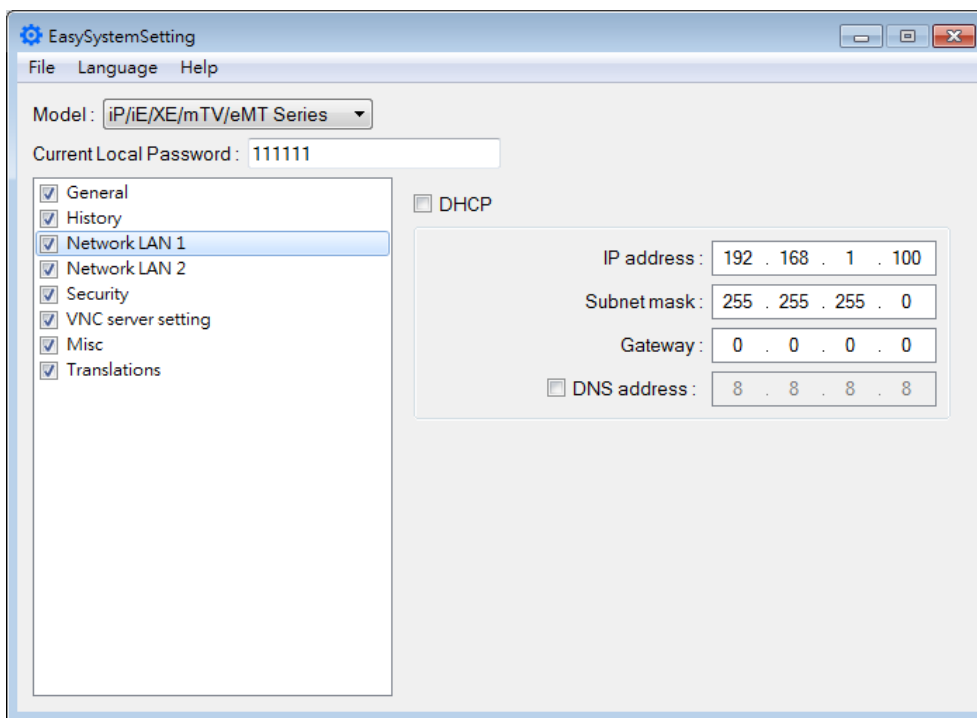
| Setting                       | Description   |
|-------------------------------|---|
| <b>Current Local Password</b> | Please enter the password used to log in System Parameter Settings.   |
| <b>General</b>                | <p>[HMI name] Enter HMI name. The name should only contain [A~Z], [a~z], [0~9], [-] and [.]</p> <p>[Back light] Adjust LCD backlight brightness.</p> <p>[Time offset] Set the HMI RTC with offset.<br/>For example, if the current RTC time is 15:00:00, and the time offset is set to -3, the updated time will be 12:00:00.</p> <p>[Portrait mode] Set the display mode.</p> <p>[Volume] Adjust sound volume.</p> |

## 28.2. Configuring EasySystemSetting

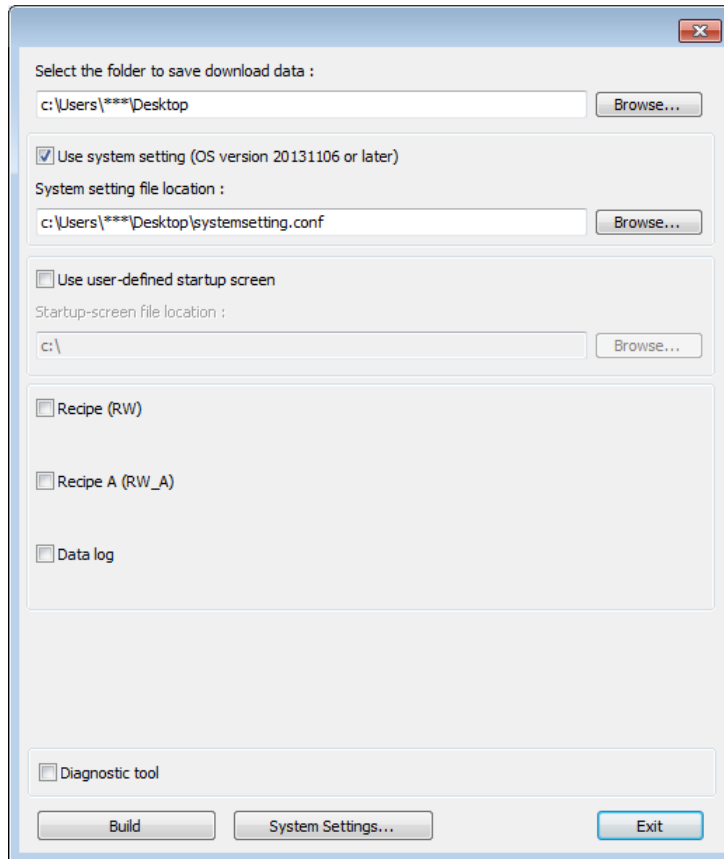
The following explains how to update HMI IP address by using SD card or USB drive.

### iP/iE/XE/mTV/eMT Series

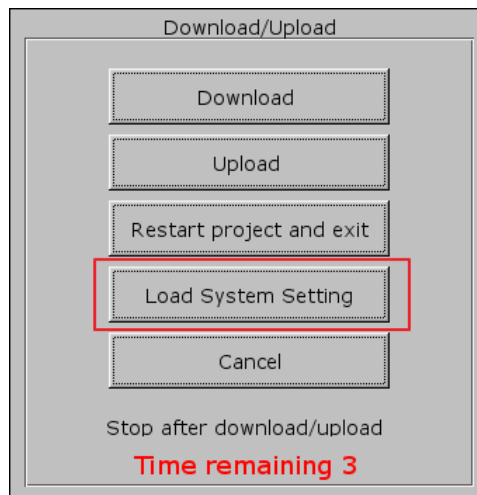
1. Open EasySystemSetting and change the Network settings as shown below.



2. Click [File] » [Save] to generate a “systemsetting.conf” file.
3. Close EasySystemSetting.
4. In EasyBuilder Pro click [Build Download Files], select [Use system setting], and browse for the systemsetting.conf file.



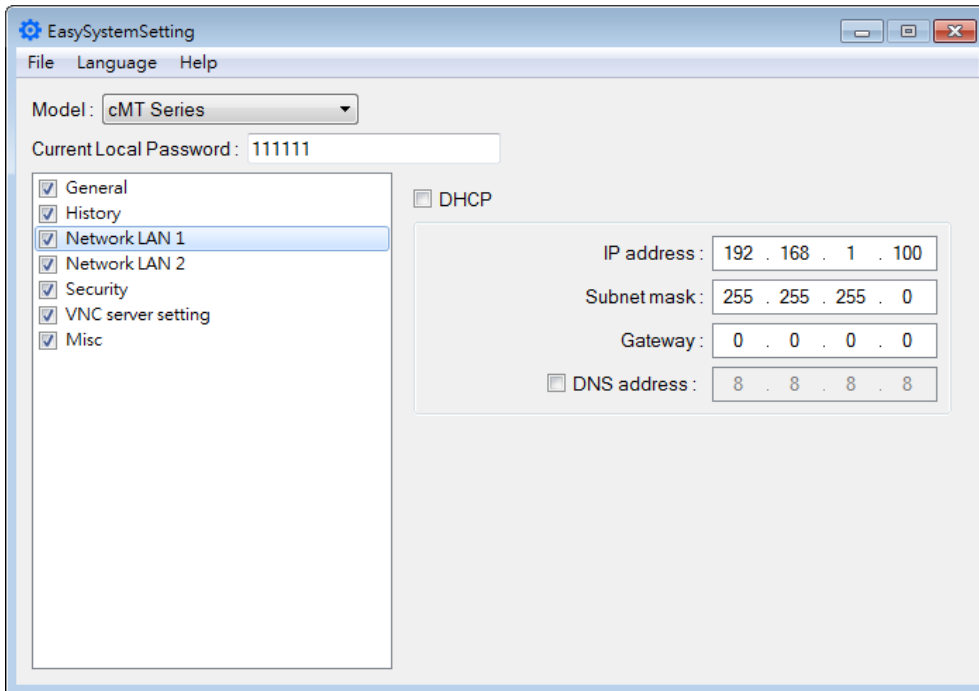
5. Click [Build] to generate the download file to be saved into the external device.
6. Insert the external device that stores the download file to HMI and the Download/Upload dialog box appears.



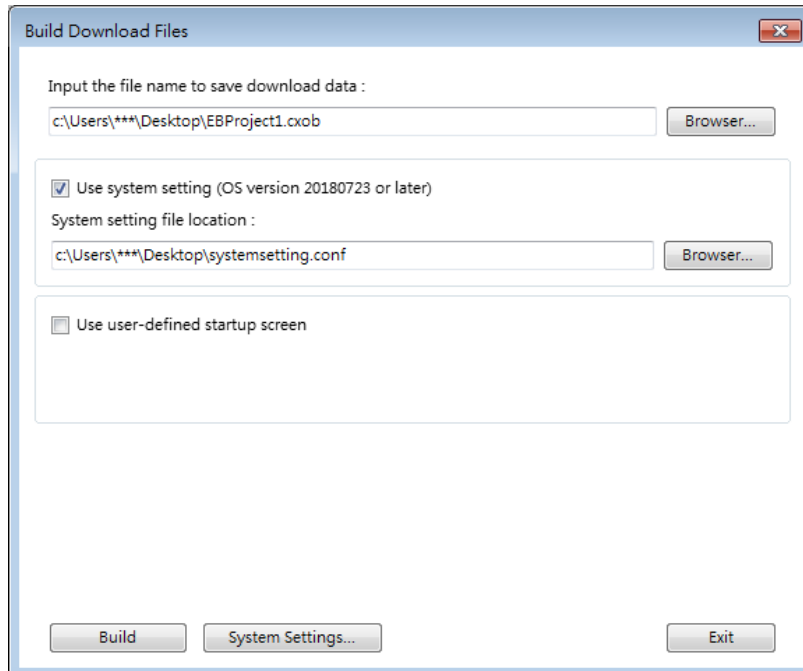
7. Press [Load System setting] and then the [Download Config Settings] message appears. The project file will be updated after finishing system settings.

### cMT/cMT X Series

1. Open EasySystemSetting and change the Network settings as shown below.

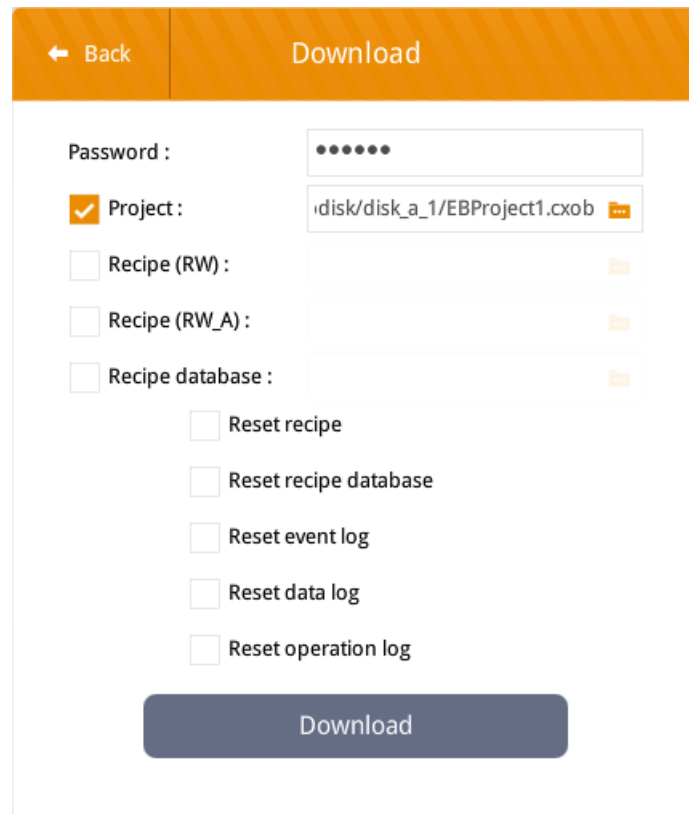


2. Click [File] » [Save] to generate a “systemsetting.conf” file.
3. Close EasySystemSetting.
4. In EasyBuilder Pro click [Build Download Files], select [Use system setting], and browse for the systemsetting.conf file.



5. Click [Build] to generate a compiled file and a system setting file with the same filename (EBProject1.cxob & EBProject1.conf). Save these files in the same directory in an external device.
6. Insert the external device to HMI and the Download/Upload dialog box appears; click

Download. Browse for the project file, enter the password, and then click Download.



← Back Download

Password :

Project :

Recipe (RW) :

Recipe (RW\_A) :

Recipe database :

Reset recipe

Reset recipe database

Reset event log

Reset data log

Reset operation log

Download

 Note

- System setting file can be downloaded using Utility Manager or EasyBuilder Pro.