

# 32. FTP Server Application

This chapter explains how to use FTP Server.

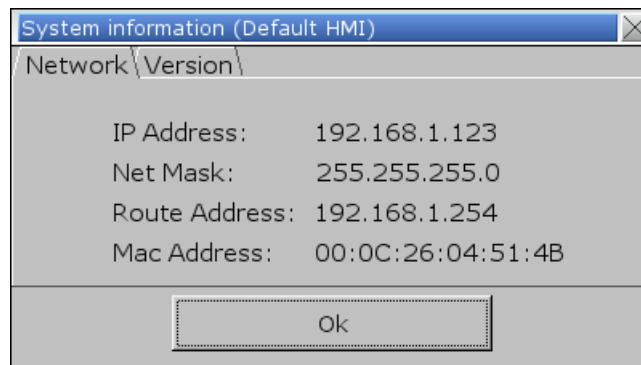
32.1. Overview.....	32-2
32.2. Steps to Log in FTP Server .....	32-2
32.3. Backup History Data and Update Recipe Data .....	32-3

## 32.1. Overview

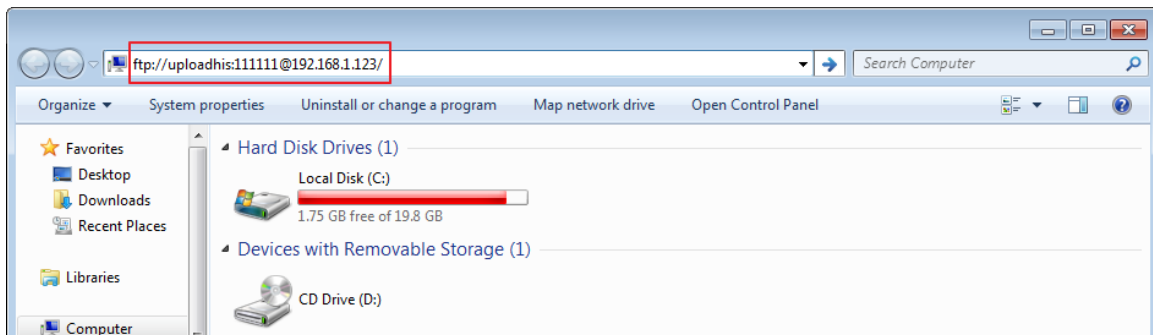
Apart from saving the history data from an HMI to your PC by using SD card, USB disk or EasyPrinter, the FTP Server can also do the backup. After downloading a project to the HMI, the FTP Server can be used to backup or update the history data and the recipe data, but not able to delete those data. Please disconnect from FTP before removing an SD card or USB disk, otherwise these external devices may not work when next time inserted.

## 32.2. Steps to Log in FTP Server

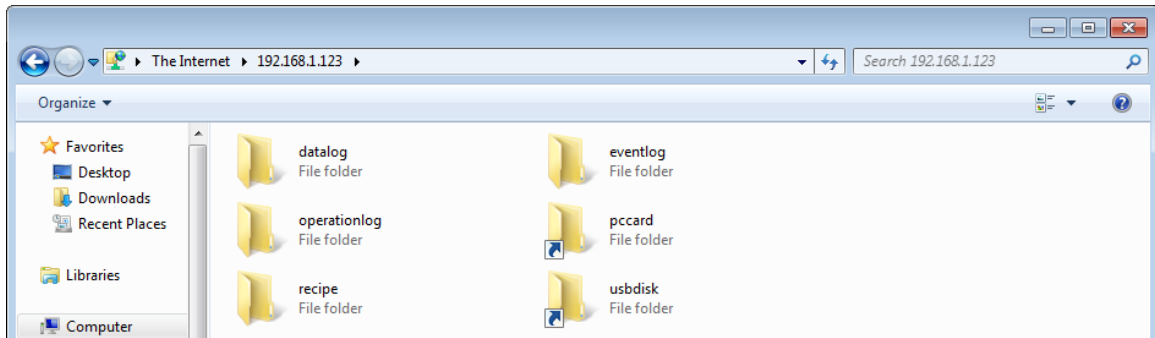
1. Before logging in FTP Server, please check the HMI IP address.



2. On PC, enter the HMI IP address: <ftp://192.168.1.123> (example), then log in by the user name: uploadhis, and enter the HMI [history upload password] (if not changed, the default password is 111111). Or, directly enter <ftp://uploadhis:111111@192.168.1.123/>

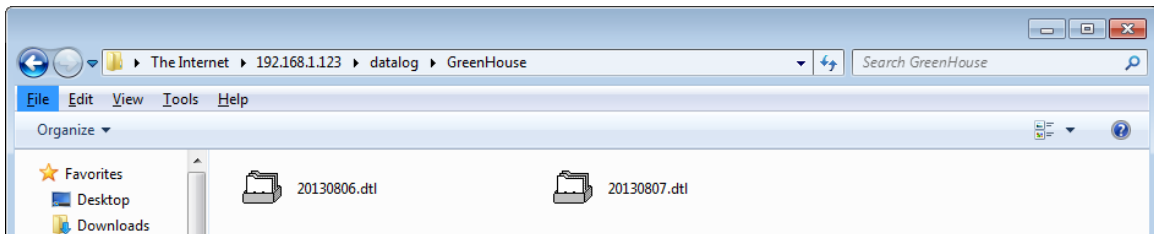


3. After entering the IP address, the ftp address: <ftp://192.168.1.123> and its folders are shown as below:

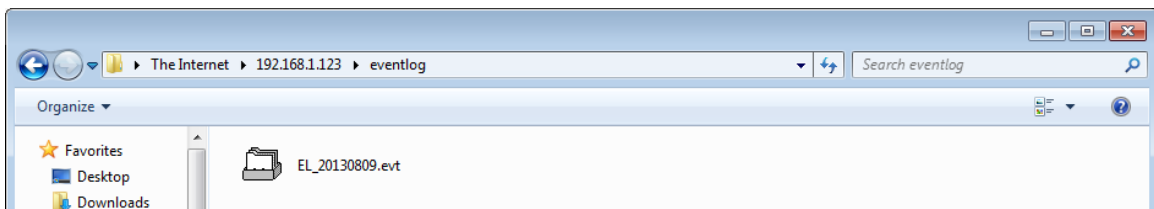


### 32.3. Backup History Data and Update Recipe Data

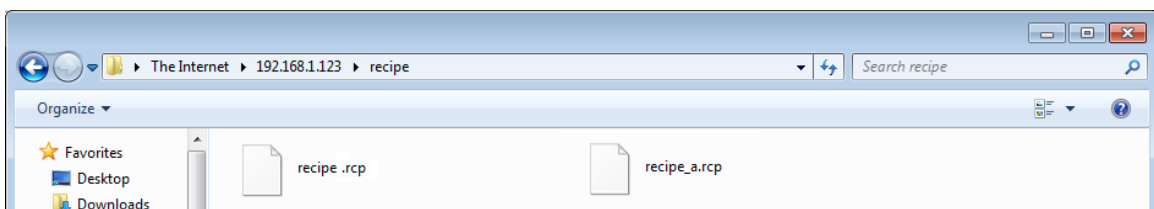
- Steps to backup Data Sampling records
  1. Click “datalog” folder to view the files.
  2. Click the file to check the records.
  3. Copy and paste the needed files to your PC.



- Steps to backup Event (Alarm) Log records
  1. Click “eventlog” folder to view the files.
  2. Copy and paste the needed files to your PC.

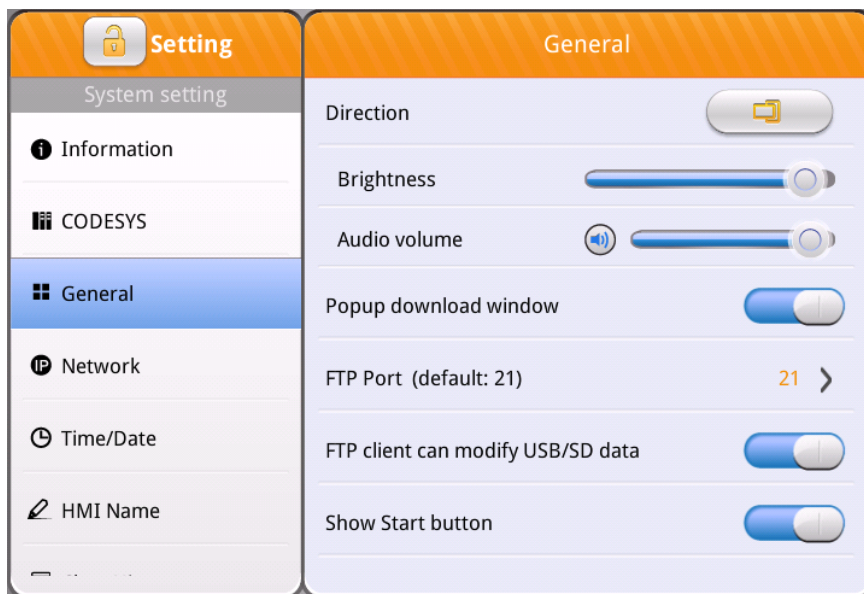
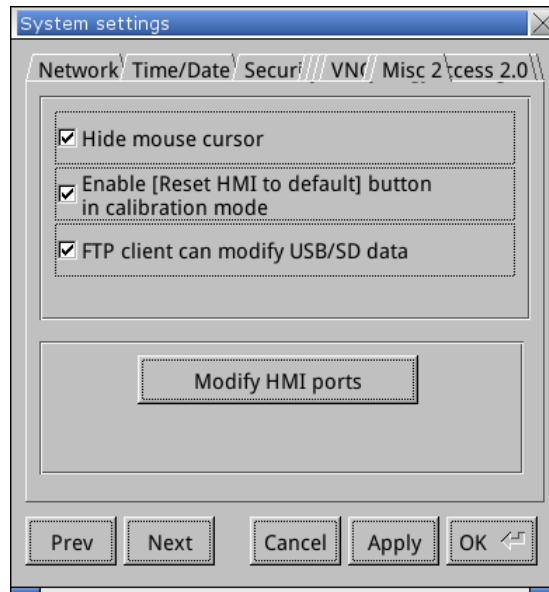


- Steps to backup or update Recipe records
  1. Click “recipe” folder to view the files.
  2. Copy and paste the needed files to your PC.



- Steps to modify data in USB/SD from FTP client
  1. By default, [FTP client can modify USB/SD data] option is not selected. With this option selected, files in USB/SD can be deleted or modified from FTP client.

2. As shown below, this option can be found in system settings » Misc 2 tab on MT Series, and in system settings » General tab on cMT / cMT X Series.



### Note

- Since the recipe data is automatically saved per minute, after updating “recipe.rcp” or “recipe\_a.rcp”, the HMI must be rebooted within one minute or the saving will be failed.
- The HMI can be rebooted by the system registers: [LB-9047] (reboot HMI) and [LB9048] (reboot HMI protection). You can set [LB-9048] ON first, and then set [LB-9047] ON to reboot the HMI.
- When using FTP server, the date of modification for the files on HMI will be UTC+0, and when users view these files on PC, the date of modification is added by PC’s time zone, which can make the time different from the actual time.