

Demo Project for Historical Data with Option List Object

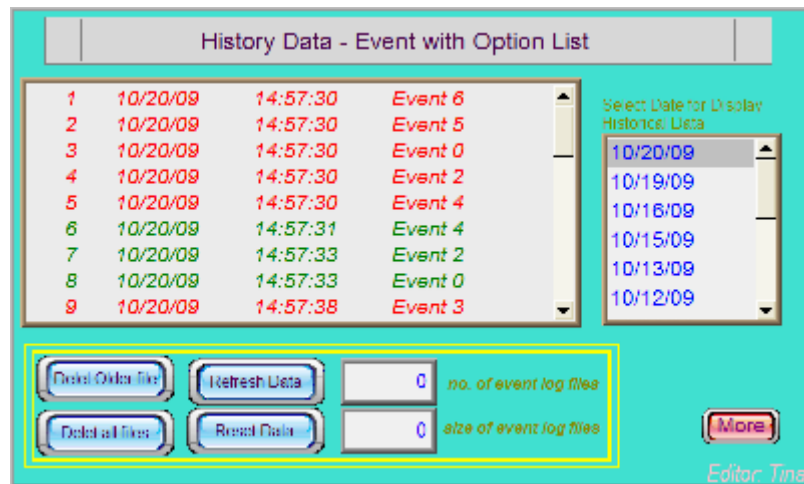
Table of Contents

1. Overview and Operation
2. Setting Up the Screen
3. Addresses

1. Overview and Operation

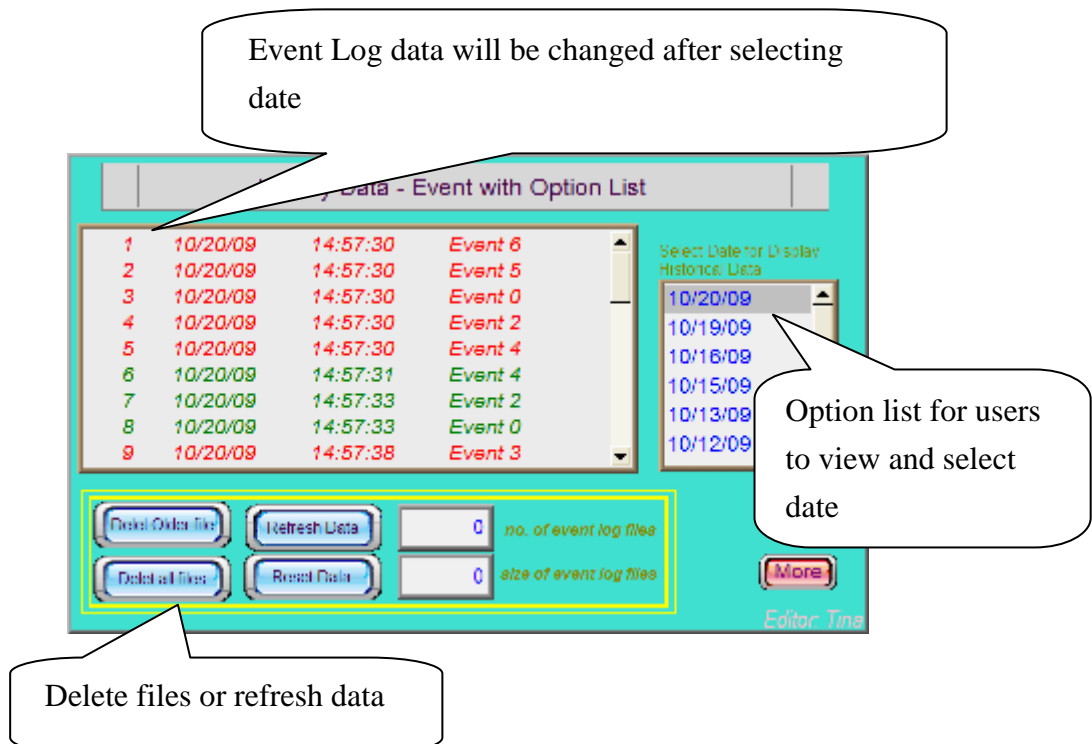
[Overview]

This demo project is to display Historical data and use Option List object for users to view and select historical files.



[Operation]

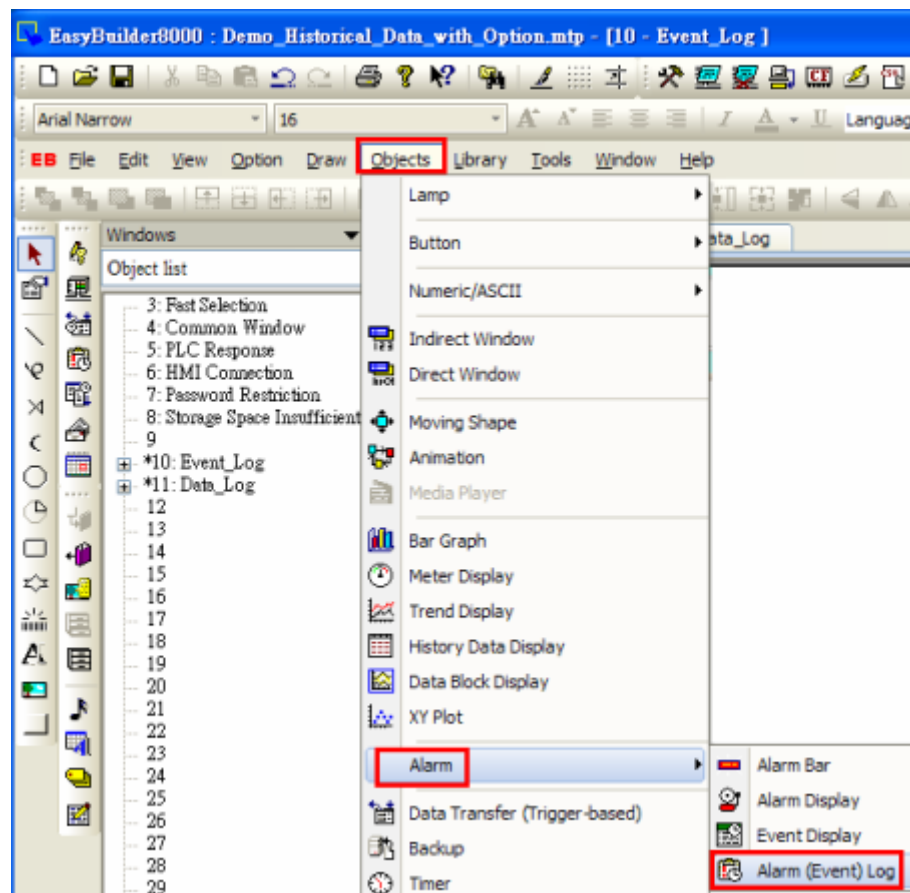
In this demo project, the Option List object is on the right side. Please click the date for displaying older files. Users can delete older files or refresh event/data sampling files by clicking the button bottom-left.



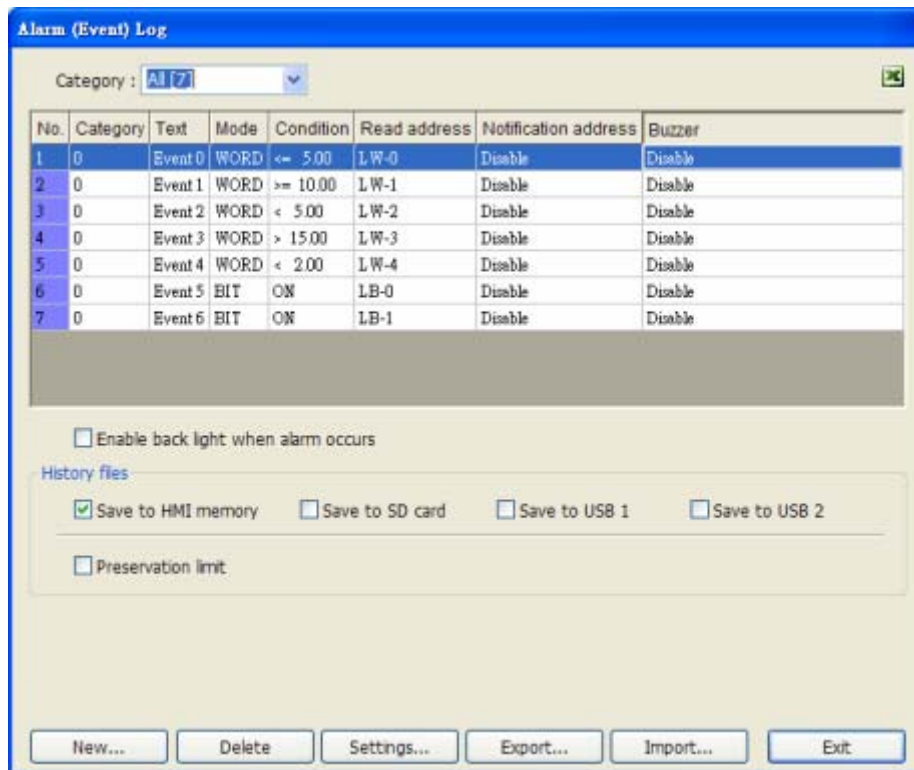
2. Setting up the screen

Setting the Alarm (Event) log and Data Sampling first and then create the Option List object.

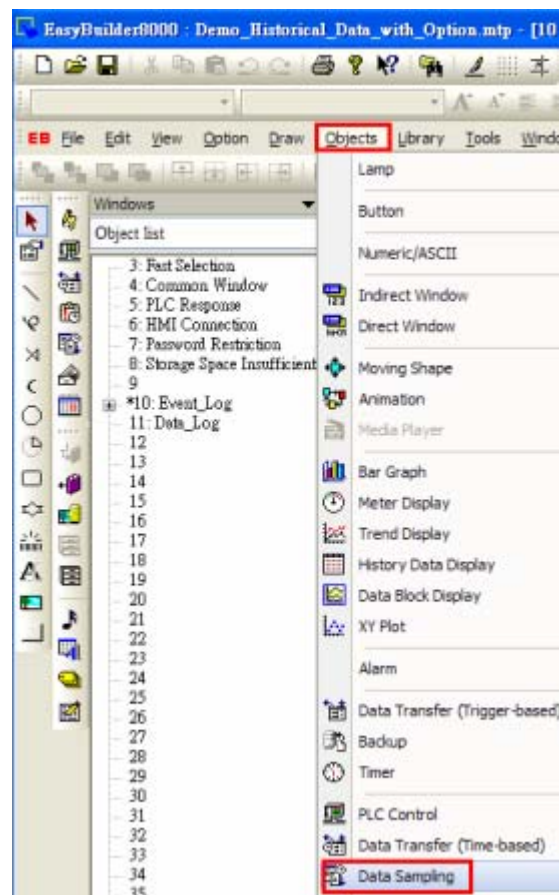
1. In the Objects area, click “Alarm (Event) Log” icon.



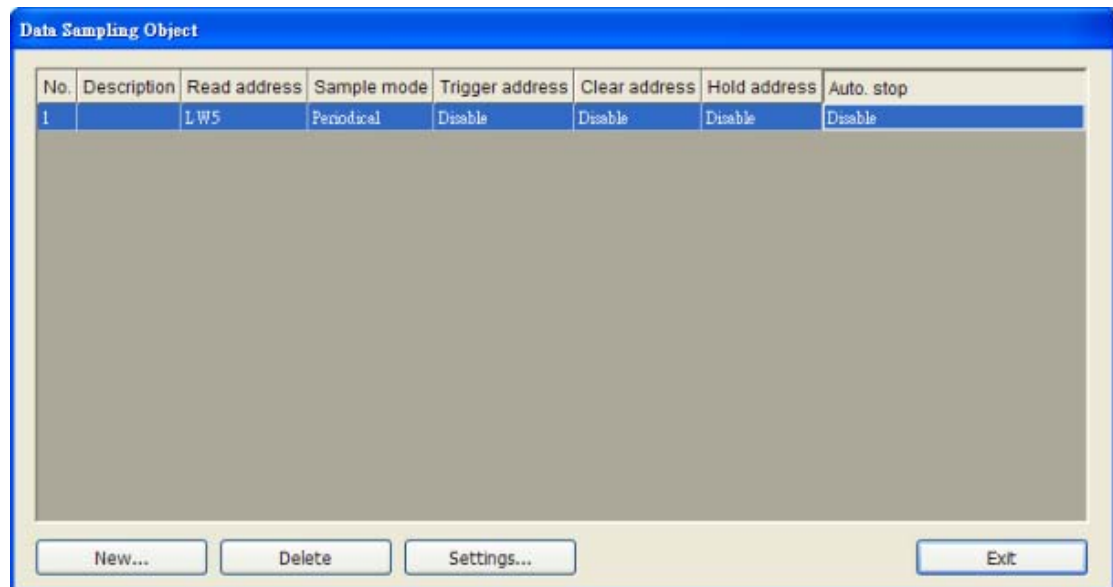
The Alarm (Event) Log table appears as below. This project is setting 7 events.



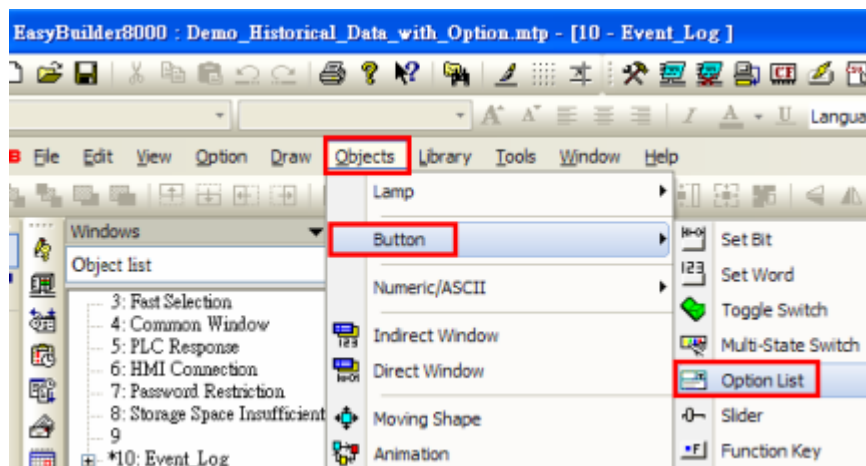
- In the Objects area, click "Data Sampling" icon.



The Data sampling dialogue box appears as below.



3. Create an Option List object in objects area.



The Option List object dialogue box appears as below.

The image shows the 'Option List Object's Properties' dialog box. It has tabs for 'Option list', 'Mapping', 'Security', 'Shape', 'Label', and 'Profile'. The 'Option list' tab is active. The dialog is divided into three main sections, each highlighted with a red box and a number:

- 1. Description:** A text field for the object's description.
- 2. Attribute:** Contains 'Mode' (set to 'List box'), 'Background' (a color picker), and 'Selection' (a list box).
- 3. Control address:** Contains 'PLC name' (set to 'Local HMI'), 'Device type' (set to 'LW'), 'Address' (set to '100'), 'System tag' (unchecked), 'Address format' (set to 'dddd [range : 0 ~ 10500]'), 'Index register' (unchecked), '16-bit Unsigned' (selected), and 'Write when button is released' (checked).

Below these sections is a section for 'Source (dates of historical data)' which is also highlighted with a red box and a number '3.'. It contains 'Enable' (checked), 'Type' (set to 'Alarm (Event) Log'), and 'Date' (set to 'MM/DD/YY'). At the bottom are 'OK', 'Cancel', and 'Help' buttons.

Step 1. Select List box or Drop-down list.

A close-up of the 'Mode' dropdown menu. The menu is open, showing two options: 'List box' (which is highlighted) and 'Drop-down List'.

Step 2. Control the display of the object, this project is setting LW100.

Step 3. Source (dates of historical data)

Alarm (Event) log is used to display Historical Event-Display.

Data sampling is used to display Historical Trend-Display or Data-Display.

Source (dates of historical data)

☒ Enable

Type : Alarm (Event) Log ▼

Alarm (Event) Log
Data sampling

Date : MM/DD/YY ▼

3. Addresses

The addresses used in this demo project are listed below. Please change these addresses according to your system.

Addresses		Object's ID	Detail
Window 10			
Word	LW0	SW_0	Trigger event 0
	LW1	SW_1	Trigger event 1
	LW2	SW_2	Trigger event 2
	LW3	SW_3	Trigger event 3
	LW4	SW_4	Trigger event 4
Bit	LB0	SB_0	Trigger event 5
	LB1	SB_1	Trigger event 6
Option List	LW100	OL_0	History control
System reserved address	LB9022	SB_4	Delete the earliest event log file
	LB9023	SB_5	Delete all event log files
	LB9024	SB_2	Refresh event log information
	LB9021	SB_3	Reset current Event Log
	LW9060	NE_0	No. of event log files
	LW9061	NE_1	Size of event log files
Window 11			
Word	LW5~LW10	SW_0~SW_5	Data sampling reading addresses
Option List	LW200	OL_0	History control
System reserved address	LB9025	SB_2	Delete the earliest data sampling file
	LB9026	SB_3	Delete all data sampling files
	LB9027	SB_1	Refresh data sampling information
	LW9063	NE_0	No. of data sampling files
	LW9064	NE_1	Size of data sampling files